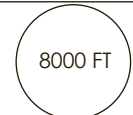
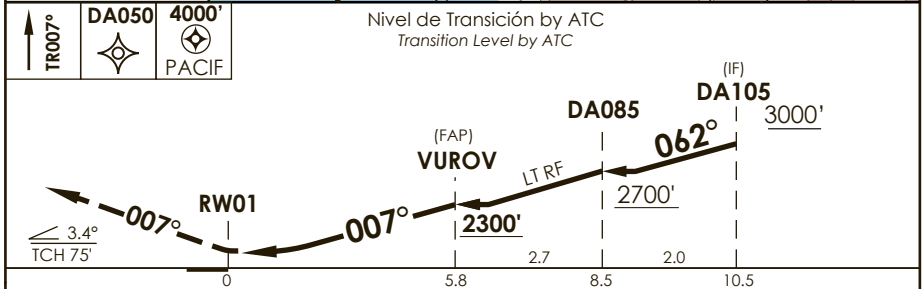
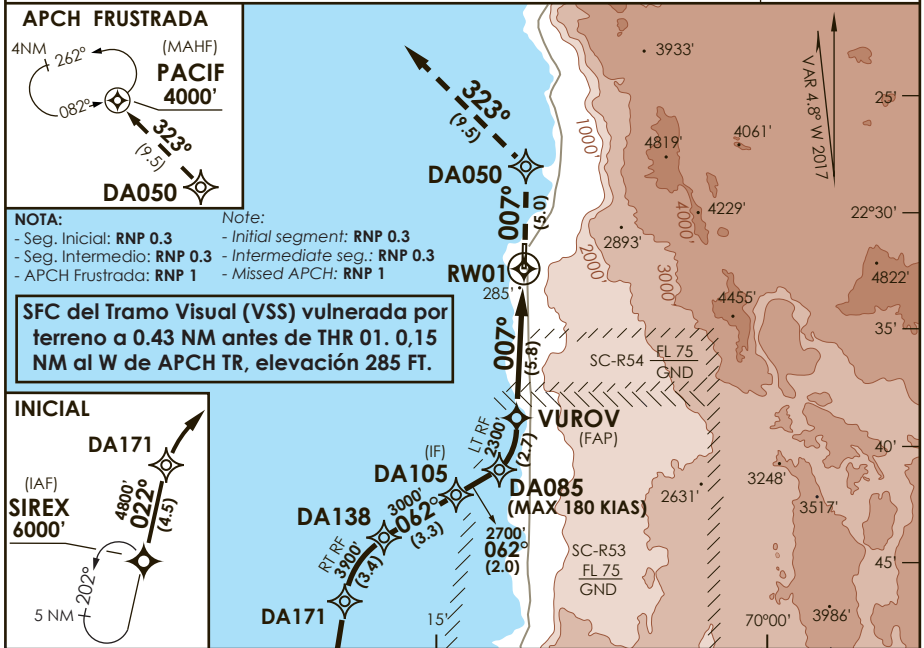


AP. DIEGO ARACENA IQUIQUE - CHILE

SCDA IAC 7
RNAV (RNP) Rwy 01

APP IQUIQUE RADAR <i>Iquique Radar Approach</i>	122.7	TORRE IQUIQUE <i>Iquique Tower</i>	118.9	CONTROL TERRESTRE <i>Ground Control</i>	121.7
RNAV	FINAL APCH CRS 007°	MNM ALT VUROV 2300'	DA/H ver mínimos DA/H refer to minimums	AD Elev. THR 01 Elev. 156'	 MSA 25 NM RW01
APCH FRUSTRADA: ASC en TR007° directo a DA050, luego en TR323° hacia PACIF 4000' e ingresar en HLDG. Missed APCH: Climb on TR007° direct to DA050, then on TR323° to PACIF 4000' and enter on HLDG.					



C A T E G O R I A	DIRECTO RWY 01 <i>Straight in RWY 01</i>	RNP AR RWY 01 SCDA: Requiere RF. Para sistemas Baro VNAV no compensados proc NA bajo 5°C o sobre 45°C. Autorización requerida de acuerdo a DAN 06-22. RF required. For uncompensated Baro VNAV systems procedure NA below 5°C or above 45°C. Authorization required according to DAN 06-22. Mantenerse en o sobre trayectoria PAPI TIL THR Remain on or above PAPI path TIL THR. MNM ALTN: RNP 0.30 : (1484') 5.0 Km.
	RNP 0.30	
	DA 1640' (1484')	
	5.0 Km	
Veloc. Terrestre Kts	80 100 120 140 160	RQR AUTORIZACIÓN ESPECIAL PARA ACFT Y CREW SPECIAL ACFT AND AIRCREW AUTHORIZATION REQUIRED LDG NIGHT NA WO PAPI Landing at night not authorized without PAPI
Angulo DES 3.4° FPM	481' 602' 722' 842' 963'	
MAPt en DA		

CAMBIO: Nuevo PROC
Change: New PROC

DGAC AMDT 81

17 AGOSTO 2017

DASA / SECCION AIS-MAP