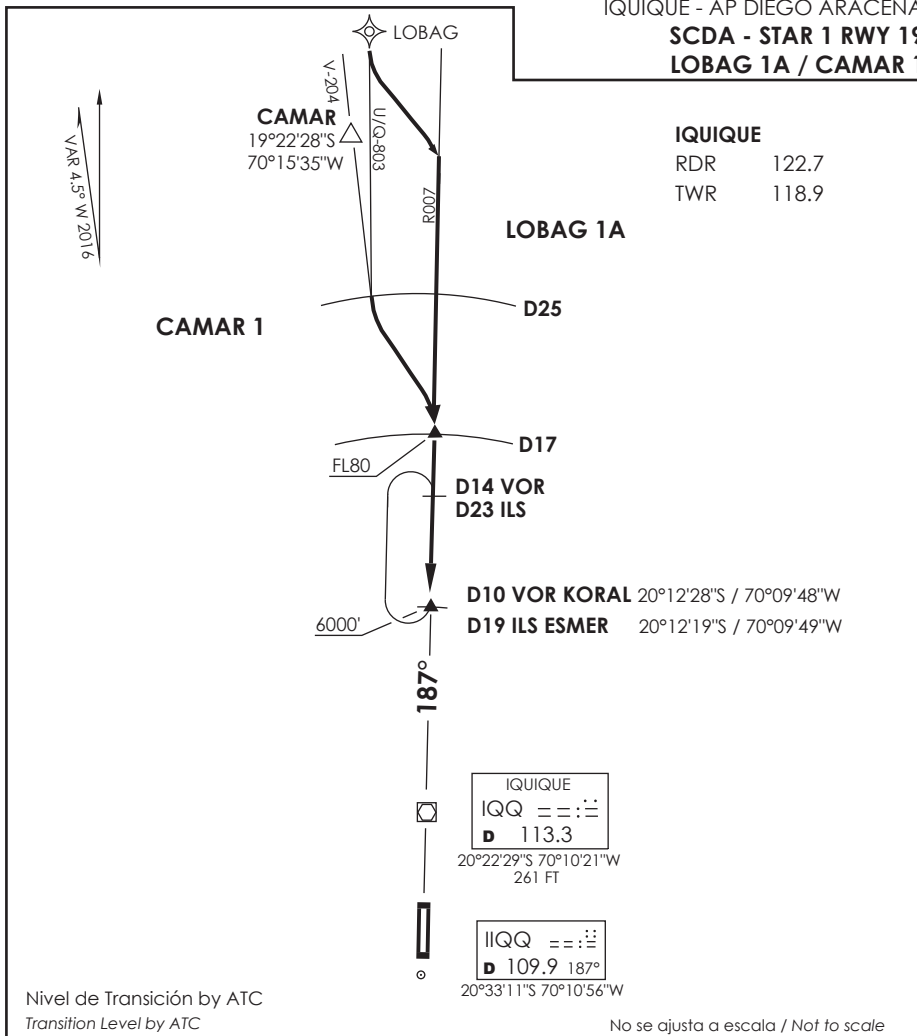


**IQUIQUE**  
 RDR 122.7  
 TWR 118.9



Nivel de Transición by ATC  
 Transition Level by ATC

No se ajusta a escala / Not to scale

**STAR LOBAG 1A / CAMAR 1**

**CAMAR 1:** En D25 N IQQ VOR/DME, abandonar AWY para interceptar R007 (TR187°) IQQ VOR directo a KORAL INT / ESMER INT. Cruzar D17 N IQQ a FL80 o superior, cruzar KORAL INT / ESMER INT a 6000FT o superior, luego según autorización ATC.

**CAMAR 1:** At D25 N IQQ VOR/DME, leave AWY to intercept R007 (TR187°) IQQ VOR direct to KORAL INT / ESMER INT. Cross D17 N IQQ at or above FL80, cross KORAL INT/ESMER INT at or above 6000FT, then according to ATC clearance.

**LOBAG 1A:** En LOBAG abandonar AWY para interceptar R007 (TR187°) IQQ VOR directo a KORAL INT / ESMER INT. Cruzar D17 N IQQ a FL80 o superior, cruzar KORAL INT / ESMER INT a 6000FT o superior, luego según autorización ATC.

**LOBAG 1A:** At LOBAG, leave AWY to intercept R007 (TR187°) IQQ VOR direct to KORAL INT/ESMER INT. Cross D17 N IQQ at or above FL80, cross KORAL INT / ESMER INT at or above 6000FT, then according to ATC clearance.