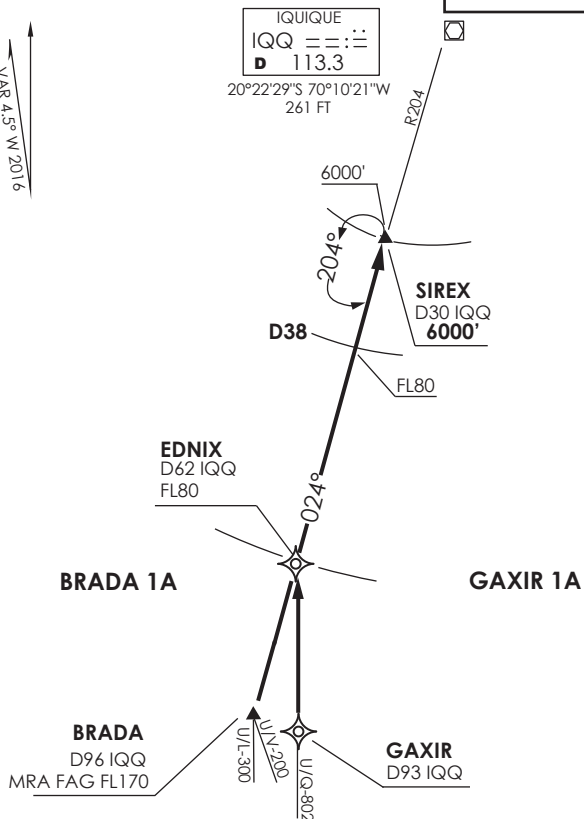


VAR 4.5° W 2016

IQUIQUE  
 IQQ = :: ::  
 D 113.3  
 20°22'29"S 70°10'21"W  
 261 FT

**IQUIQUE**  
 RDR 122.7  
 TWR 118.9



Nivel de Transición by ATC  
 Transition Level by ATC

No se ajusta a escala / Not to scale

**STAR BRADA 1A / GAXIR 1A**

**BRADA 1A:** En BRADA, abandonar AWY para interceptar R204 (TR024°) IQQ VOR directo a SIREX INT. Cruzar EDNIX a FL80 o superior, cruzar D38 S IQQ a FL80 o superior, cruzar SIREX INT a 6000FT o superior, luego según autorización ATC.

**BRADA 1A:** At BRADA, leave AWY to intercept R204 (TR024°) IQQ VOR direct to SIREX INT. Cross EDNIX at or above FL80, cross D38 S IQQ at or above FL80, cross SIREX INT at or above 6000FT, then according to ATC

**GAXIR 1A:** En GAXIR, abandonar AWY para interceptar R204 (TR024°) IQQ VOR directo a SIREX INT. Cruzar EDNIX a FL80 o superior, cruzar D38 S IQQ a FL80 o superior, cruzar SIREX INT a 6000FT o superior, luego según autorización ATC.

**GAXIR 1A:** At GAXIR, leave AWY to intercept R204 (TR024°) IQQ VOR direct to SIREX INT. Cross EDNIX at or above FL80, cross D38 S IQQ at or above FL80, cross SIREX INT at or above 6000FT, then according to ATC