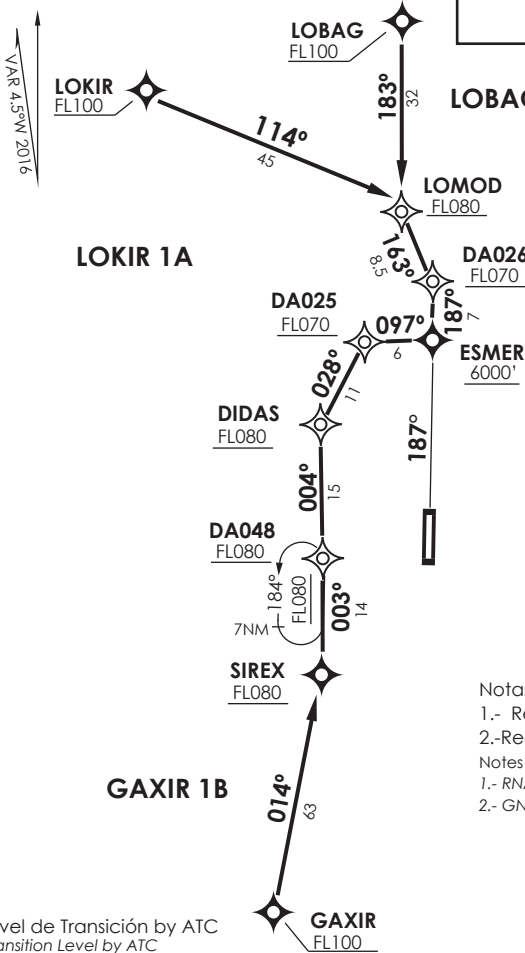


IQUIQUE
 RDR 122.7
 TWR 118.9



Notas
 1.- Requiere aprobación RNAV1 o RNP1.
 2.- Requiere GNSS.
 Notes
 1.- RNAV1 OR RNP1 approval RQRD.
 2.- GNSS required.

Nivel de Transición by ATC
 Transition Level by ATC

No se ajusta a escala / Not to scale

STAR GAXIR 1B, LOBAG 1B, LOKIR 1A RNAV

GAXIR 1B: Desde GAXIR directo a SIREX - DA048 - DIDAS - DA025 - ESMER para interceptar APCH a Rwy19. Cruzar GAXIR FL100 o superior, cruzar SIREX FL80 o superior, cruzar DA048 FL80 o superior, cruzar DIDAS FL80 o superior, cruzar DA025 FL70 o superior.

GAXIR 1B: From GAXIR direct to SIREX - DA048 - DIDAS - DA025 - ESMER to intercept APCH to Rwy19. Cross GAXIR at or above FL100, cross SIREX at or above FL80, cross DA048 at or above FL80, cross DIDAS at or above FL80, cross DA025 at or above FL70.

LOBAG 1B: Desde LOBAG directo a LOMOD - DA026 - ESMER para interceptar APCH Rwy19. Cruzar LOBAG FL100 o superior, cruzar LOMOD FL80 o superior, cruzar DA026 FL70 o superior.

LOBAG 1B: From LOBAG direct to LOMOD - DA026 - ESMER to intercept APCH Rwy19. Cross LOBAG at or above FL100, cross LOMOD at or above FL80, cross DA026 at or above FL70.

LOKIR 1A: Desde LOKIR directo a LOMOD - DA026 - ESMER para interceptar APCH Rwy19. Cruzar LOKIR FL100 o superior, cruzar LOMOD FL80 o superior, cruzar DA026 FL70 o superior.

LOKIR 1A: From LOKIR direct to LOMOD - DA026 - ESMER to intercept APCH Rwy19. Cross LOKIR at or above FL100, cross LOMOD at or above FL80, cross DA026 at or above FL70.