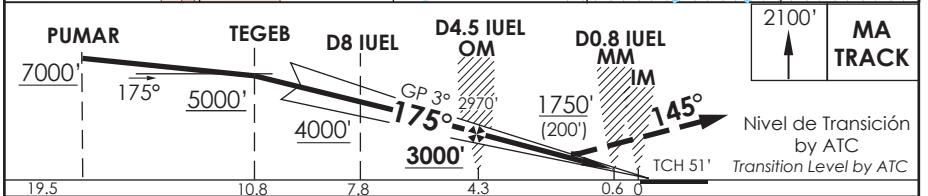
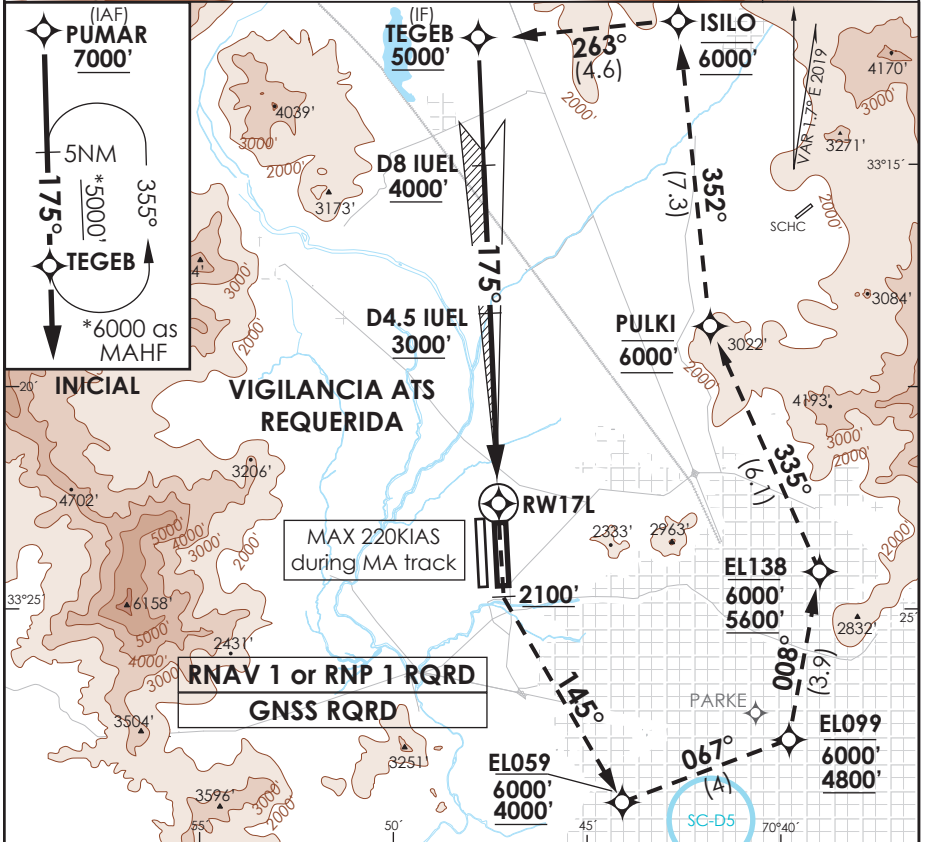


AP. ARTURO MERINO BENITEZ
SANTIAGO - CHILE

SCEL IAC 16
ILS T Rwy 17L

ATIS 132.1	SANTIAGO RADAR Santiago Radar 119.7/129.7	TORRE SANTIAGO Santiago Tower 118.1/118.35	CONTROL TERRESTRE Ground Control 122.2/122.5
LOC IUEL 110.3	FINAL APCH CRS 175°	GS OM 3000'	ILS DA (H) 1750' (200')
AD Elev. 1555' THR 17L Elev. 1550'			19000'
APCH FRUSTRADA: ASC 2100' viraje izquierda para continuar via RNAV MA TR to TEGEB 6000', luego según AUTH ATC. Missed Apch: Climb to 2100' left turn to to continue via RNAV MA TR to TEGEB 6000', then according ATC clearance.			
			MSA 25 NM AMB



C A T	* DIRECTO RWY 17L Straight in RWY 17L					CIRCULANDO Circling	ALTN Alternate Minimums
	ILS DA 1750' (200')		** LOC WO GP MDA 1980' (430')				
A	ALSF-2					NA	VER PAG. GEN 2.19
B	RVR 550m	RVR 550m	1.2 Km	ALSF-2	1.2 Km		
C	ó	ó		ALSF-2	1.6 Km		
D	0.8 Km	ó 0.8 Km		ALSF-2	2.0 Km		
				WO ALSF-2	1.6 Km		
				WO ALSF-2	2.0 Km		
				WO ALSF-2	2.4 Km		

*MNM razón ASC APCH Frustrada: 320FT/NM hasta 6000' **WO IUEL DME PROC NA
 PROCEDURE NOT AUTHORIZED WITHOUT IUEL DME

Veloc. Terrestre Kts	80	100	120	140	160
GP 3° FPM					
MIN:SEC (FAF TO MAP)					

DASA / SECCION AS-IMP

SANTIAGO / AP ARTURO MERINO BENITEZ IAC 16 ILS T RWY 17L													
NR SERIE	TRANS ID	PATH TERM	PUNTO DE RECORRIDO (WPT)	LAT SEC (SUR)	LONG SEC (WESTE)	FB / FO	COURSE/ TRACK °M/T	DIST. (NM)	TURN DIRECTION	ALTITUD	REST. VELOCIDAD	VPA/ TCH	PERF. DE NAV
10		IF	TEGEB (IAF/IF)	33°11'43,64"	70°47'47,28"	FB	-	-	-	5000FT +	-	-	1,0
15		TF	D8 IUEL	-	-	FB	175°(177.41)	4.95	-	4000FT+	-	-	ILS
20		TF	D4.5 IUEL	-	-	FB	175°(177.41)	3.50	-	3000FT+	-	-	ILS
30		TF	RW17 (MAPt)	33°22'33,89"	70°47'12,15"	FO	175°(177,42)	2,38	-	1601FT+	-	3,0/51'	ILS
40		CA	-	-	-	-	175°(177,45)	-	LT	2100FT+	220	-	1,0
50		CF	EL059 (MATF)	33°29'23.25"	70°43'49.04"	FB	145°(147.8)	-	LT	4000FT+ 6000FT-	-	-	1,0
60		TF	EL099 (MATF)	33°27'53.16"	70°39'19.08"	FB	067°(68.31)	4.05	LT	4800FT + 6000FT -	-	-	1,0
70		TF	EL138 (MATF)	33°24'06.64"	70°38'33.06"	FB	008°(9.67)	3.82	LT	5600FT + 6000FT -	-	-	1,0
80		TF	PULKI (MATF)	33°18'32,02"	70°41'26,43"	FB	335°(336.49)	6.07	-	6000FT	-	-	1.0
90		TF	ISILO (MATF)	33°11'18,25"	70°42'18,95"	FB	352°(354.19)	7.25	LT	6000FT	-	-	1.0
100		TF	TEGEB (MAHF)	33°11'43,64"	70°47'47,28"	FO	263°(264.72)	4.61	-	6000FT	-	-	1.0
110		HM	TEGEB (MAHF)	33°11'43,64"	70°47'47,28"	FB	175°(177,41)	5,00	LT	6000FT+	-	-	1,0
10	PUMAR	IF	PUMAR (IAF)	33°03'09,76"	70°48'14,36"	FB	-	-	-	7000FT +	-	-	1,0
20	PUMAR	TF	TEGEB (IAF/IF)	33°11'43,64"	70°47'47,28"	FB	175°(177,44)	8,56	-	5000FT +	-	-	1,0