

# AP. ANDRÉS SABELLA ANTOFAGASTA - CHILE

# SCFA IAC 10 RNAV (RNP) Z Rwy 19

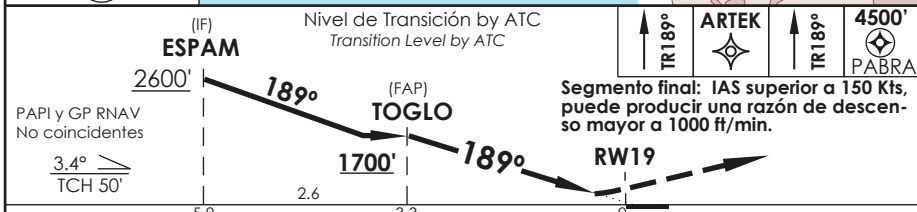
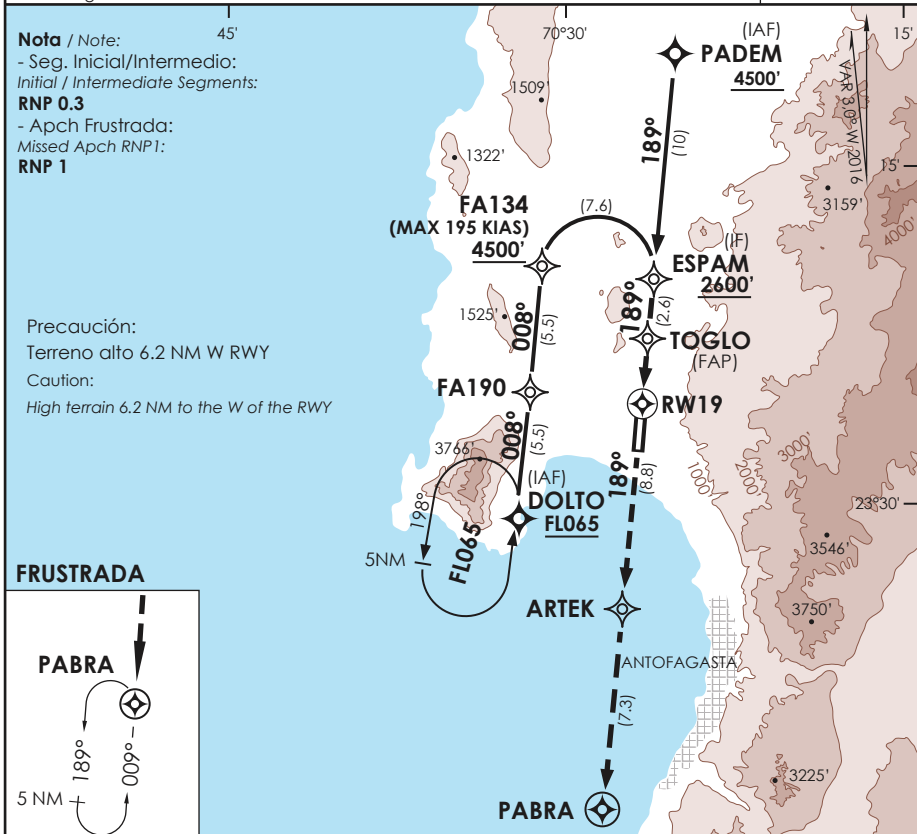
APP ANTOFAGASTA RADAR Antofagasta Approach	120.9 / 119.3	TORRE ANTOFAGASTA Antofagasta Tower	118.1	CONTROL TERRESTRE Ground Control	121.9
---	---------------	--	-------	-------------------------------------	-------

<b>RNAV</b>	FINAL APCH CRS <b>189°</b>	MNM ALT TOGLO <b>1700'</b>	DA/H ver mínimos DA/H refer to minimums	AD Elev. THR 19 Elev	<b>455'</b> <b>455'</b>
-------------	-------------------------------	-------------------------------	--	-------------------------	----------------------------

APCH FRUSTRADA: Ascenso en TR189° directo a ARTEK, posterior directo a PABRA, ingrese en HLDG a 4500' o según autorización ATC.

Missed Apch: Climb on TR189° direct to ARTEK, then direct to PABRA, enter in HLDG 4500' or according to ATC clearance.

7200 FT  
MSA 25 NM RW19



C A T E G O R Í A	DIRECTO RWY 19 Straight in RWY 09		<b>RNP AR RWY 19 SCFA:</b> Requiere RF. Para sistemas Baro VNAV no compensados proc NA bajo 7°C o sobre 50°C para CAT A/B/C, y bajo 7°C o sobre 30°C para CAT D. Autorización requerida de acuerdo a DAN 06-22. RF required. For uncompensated Baro VNAV systems procedure NA below 7°C or above 50°C for CAT A/B/C, and below 7°C or above 30°C for CAT D. Authorization required according to DAN 06-22.				
	RNP 0.1 DA <b>880'</b> (422')	RNP 0.30 DA <b>1290'</b> (829')					
	<b>2.0 Km</b>	<b>4.0 Km</b>					
	Veloc. Terrestre Kts		80	100	120	140	160
Angulo DES 3.4°		481'	602'	722'	842'	963'	<b>RQR AUTORIZACIÓN ESPECIAL PARA ACFT Y CREW</b> SPECIAL ACFT AND AIRCREW AUTHORIZATION RQRD
MAPt en DA							