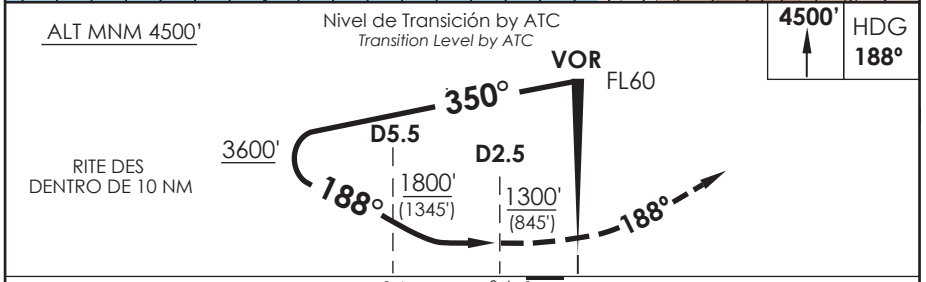
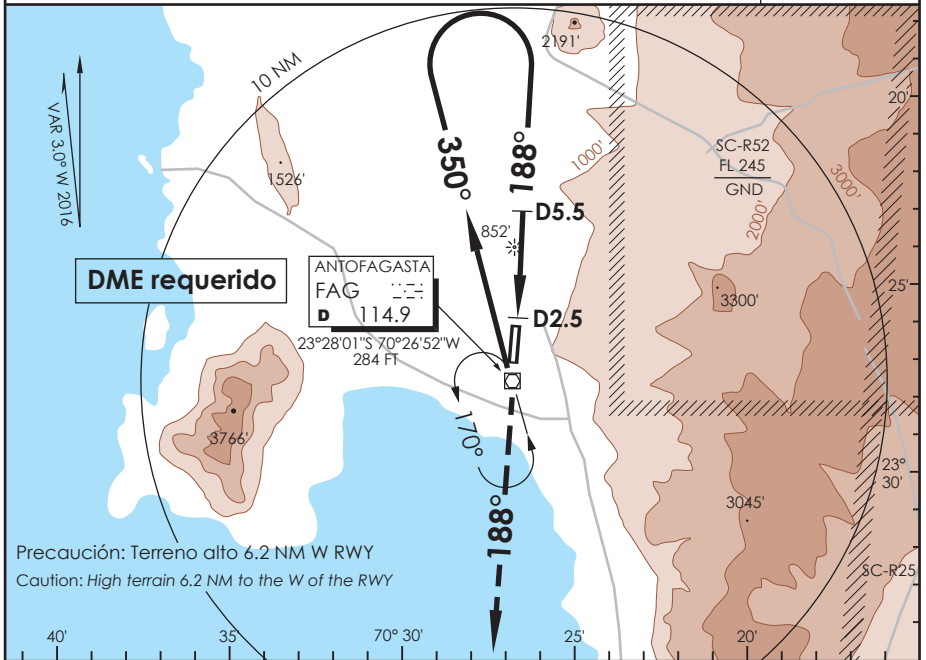


# AP. ANDRÉS SABELLA ANTOFAGASTA - CHILE

SCFA IAC 3  
VOR X Rwy 19

APP ANTOFAGASTA RADAR Antofagasta Approach 120.9 / 119.3		TORRE ANTOFAGASTA Antofagasta Tower 118.1		CONTROL TERRESTRE Ground Control 121.9	
VOR FAG <b>114.9</b>	FINAL APCH CRS <b>188°</b>	<b>WO FAF</b>	MDA(H) <b>1300' (845')</b>	AD Elev. THR 19 Elev <b>455'</b>	7200 FT MSA 25 NM FAG
APCH FRUSTRADA: Ascenso a 4500' HDG 188°, luego según autorización ATC. Missed Apch: Climb to 4500' on HDG 188°, then according to ATC clearance.					



C A B C D	DIRECTO RWY 19 <i>Straight in RWY 19</i>	CIRCULANDO OESTE <i>Circling West</i>		ALTN <i>Alternate Minimums</i>	
	MDA <b>1300' (845')</b>				
A	1.6 Km	1300' (845')	2.0 Km	(845')	3.2 Km
B	2.0 Km				
C	4.0 Km		4.0 Km		4.0 Km
D	4.4 Km	1460' (1005')	4.8 Km	(1005')	4.8 Km
CTN: Pendiente de descenso de 3.5° o superior (6.1%) CTN: Descent gradient greater than 3.5° (6.1%)					

DASA / SECCION AIS-WAP