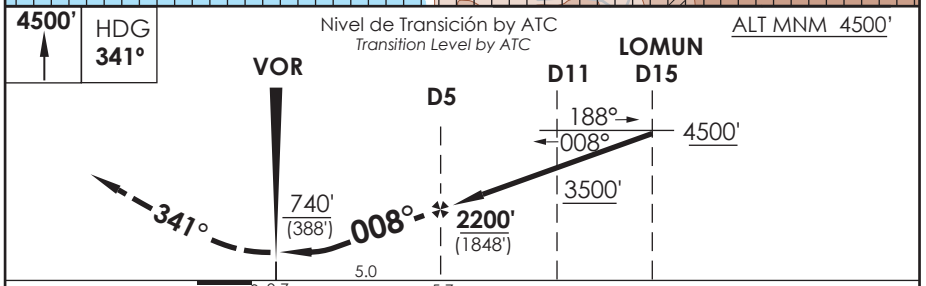
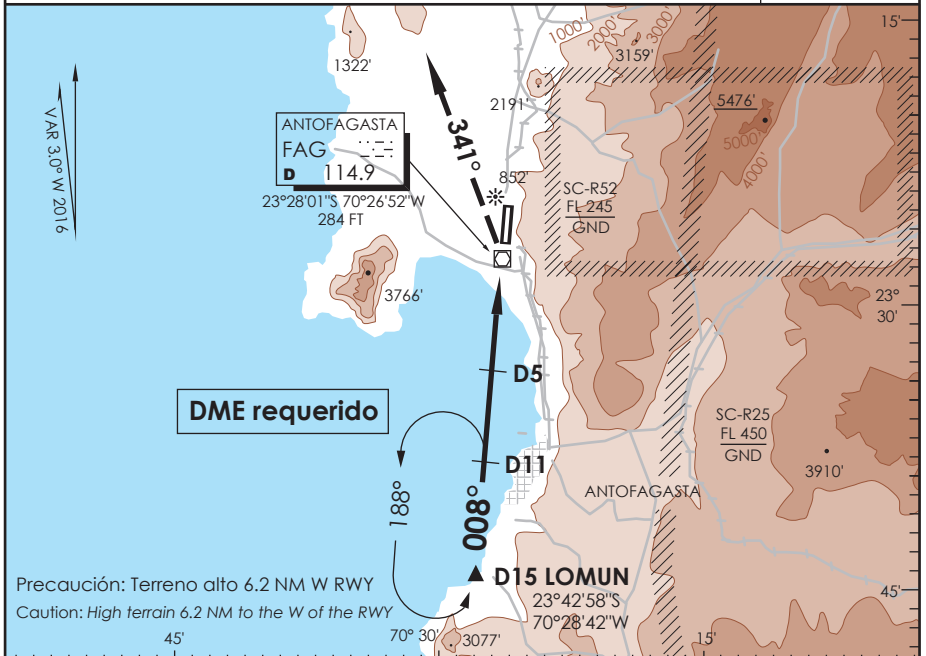


AP. ANDRÉS SABELLA ANTOFAGASTA - CHILE

SCFA IAC 4
VOR Z Rwy 01

APP ANTOFAGASTA RADAR Antofagasta Approach 120.9 / 119.3		TORRE ANTOFAGASTA Antofagasta Tower 118.1		CONTROL TERRESTRE Ground Control 121.9	
VOR FAG 114.9	FINAL APCH CRS 008°	MNM ALT D 5.0 2200' (1848')	MDA(H) 740' (388')	AD Elev. THR 01 Elev 455'	352'
APCH FRUSTRADA: Ascenso a 4500' HDG 341°, luego según autorización ATC. Missed Apch: Climb to 4500' on HDG 341°, then according to ATC clearance.					7200 FT MSA 25 NM FAG



C	DIRECTO RWY 01 <i>Straight in RWY 01</i>	CIRCULANDO OESTE * Circling West	ALTN Alternate Minimums
	MDA 740' (388')		
A		960' (505')	1.6 Km (800')
B	1.6 Km	1300' (845')	2.0 Km (845')
C	2.0 Km	1460' (1005')	4.0 Km (1005')
D			4.8 Km (1005')

* CAT C-D NA de noche / Cat C-D not authorized at night

Veloc. Terrestre Kts	80	100	120	140	160
Angulo DES 2,97° PFM	425'	525'	631'	736'	841'
FAF to MAP 5.0 NM	3:45	3:00	2:30	2:08	1:52

DASA / SECCION AIS-WAP