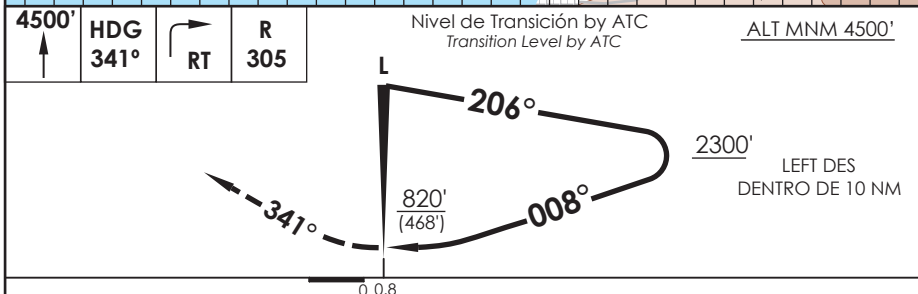
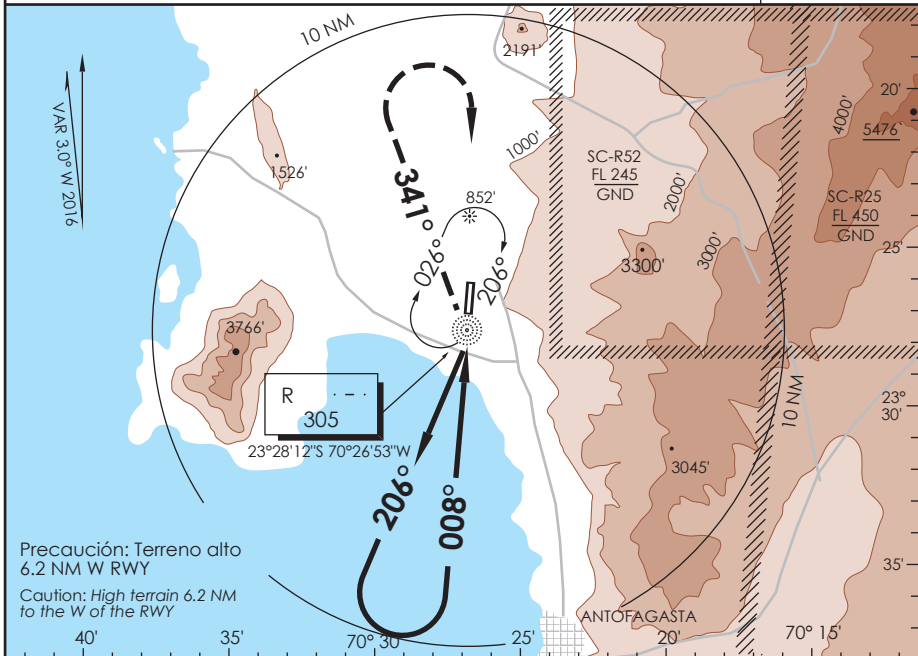


AP. ANDRÉS SABELLA ANTOFAGASTA - CHILE

SCFA IAC 6
NDB Rwy 01

APP ANTOFAGASTA RADAR Antofagasta Approach 120.9 / 119.3		TORRE ANTOFAGASTA Antofagasta Tower 118.1		CONTROL TERRESTRE Ground Control 121.9	
L "R" 305	FINAL APCH CRS 008°	WO FAF	MDA(H) 820' (468')	AD Elev. THR 01 Elev 455'	7200 FT MSA 25 NM R
APCH FRUSTRADA: Ascenso a 4500' HDG 341°, viraje derecha directo L "R", luego según autorización ATC. Missed Apch: Climb to 4500' on HDG 341°, right turn direct to "R" L, then according to ATC clearance.					



C A B C D	DIRECTO Rwy 01 <i>Straight in Rwy 01</i>	CIRCULANDO OESTE * <i>Circling West</i>	ALTN <i>Alternate Minimums</i>
	MDA 820' (468')		
A	1.6 Km	960' (505')	(800')
B		1300' (845')	(845')
C		1460' (1005')	(1005')
D			
* CAT C-D NA de noche / Cat C-D not authorized at night			

DASA / SECCION AIS-MAP