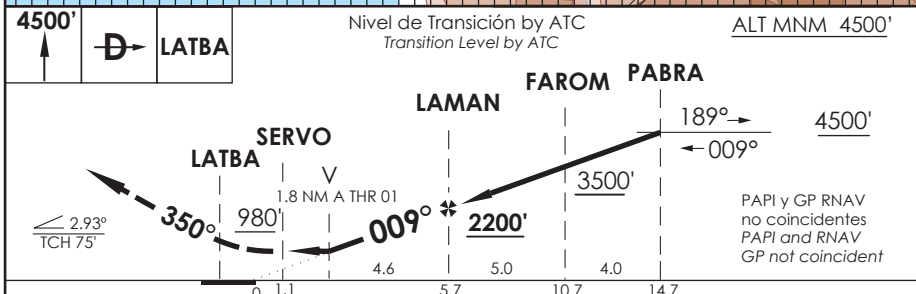
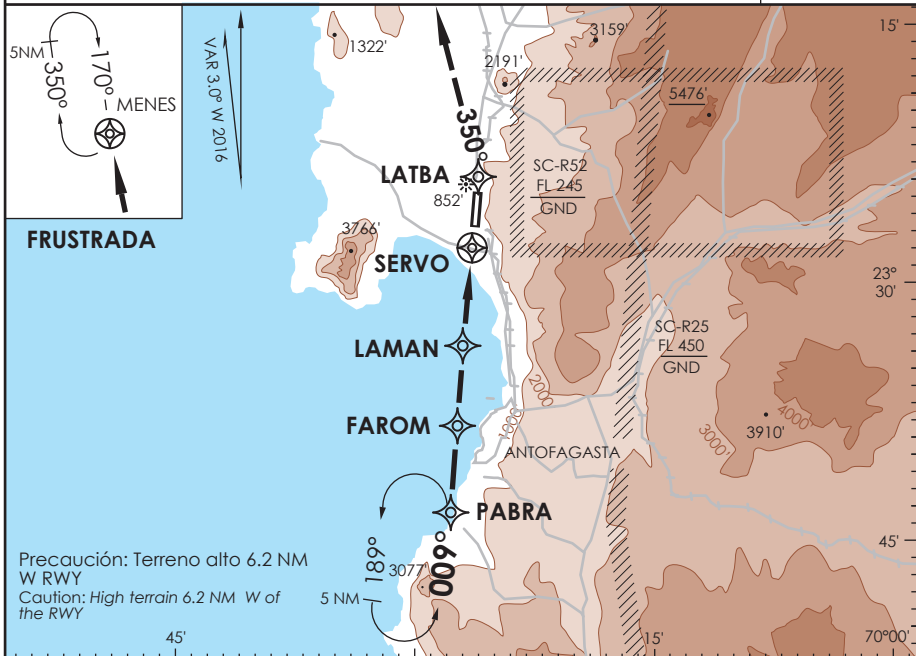


AP. ANDRÉS SABELLA ANTOFAGASTA - CHILE

SCFA IAC 7 RNAV (GNSS) Y Rwy 01

APP ANTOFAGASTA RADAR Antofagasta Approach	120.9 / 119.3	TORRE ANTOFAGASTA Antofagasta Tower	118.1	CONTROL TERRESTRE Ground Control	121.9
---	---------------	--	-------	-------------------------------------	-------

RNAV	FINAL APCH CRS 009°	MNM ALT LAMAN 2200'	LNAV MDA(H) 980' (628')	AD Elev. THR 01 Elev 455' 352'	7200 FT MSA 25 NM SERVO
APCH FRUSTRADA: Ascenso 4500' directo LATBA - MENES, ingreso HLDG 170° derecho o según autorización ATC. Missed Apch: Climb to 4500' direct LATBA direct MENES, enter on HLDG 170° right or according to ATC clearance.					



C A B C D	DIRECTO RWY 01 <i>Straight in RWY 01</i>	CIRCULANDO OESTE * <i>Circling West</i>	ALTN <i>Alternate Minimums</i>	
	LNAV MDA 980' (628')			
A	1.6 Km	980' (525')	1.6 Km	(800')
B		1300' (845')	2.0 Km	(845')
C			4.0 Km	4.0 Km
D		1460' (1005')	4.8 Km	(1005')
-Requiere aprobación RNP APCH. -RNP APCH approval RQRD.		* CAT C-D NA de noche * Cat C-D not authorized at night		

Veloc. Terrestre Kts	80	100	120	140	160
Angulo DES 2.93°	415'	518'	622'	726'	829'
MAPf en SERVO					

DASA / SECCION AIS-MAP