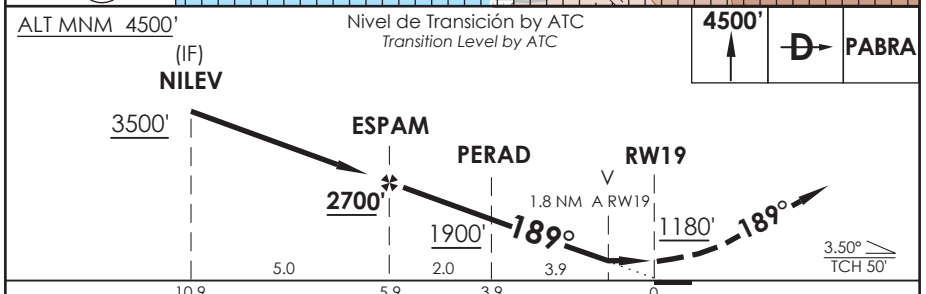
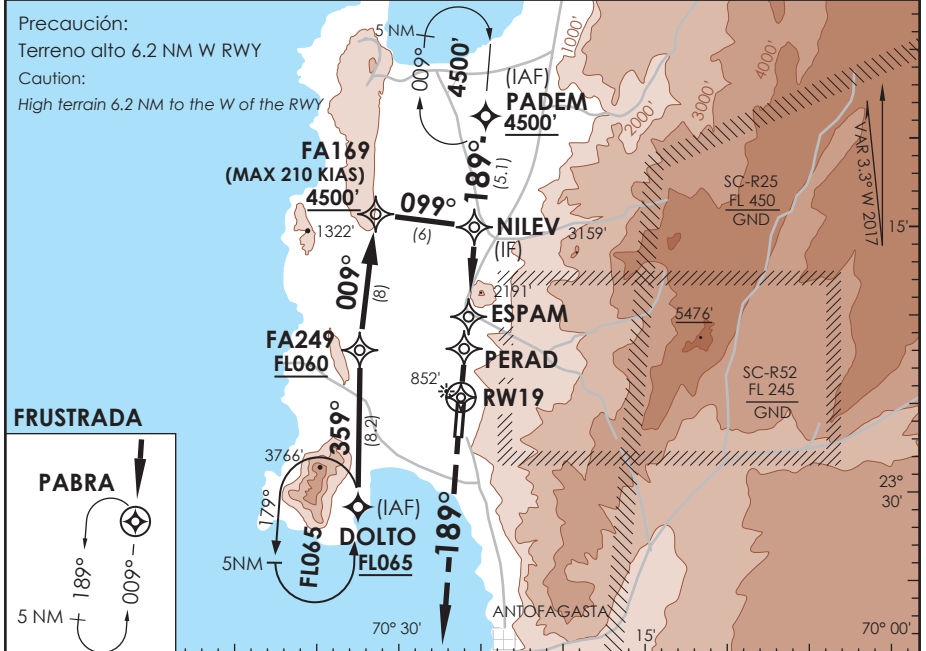


AP. ANDRÉS SABELLA ANTOFAGASTA - CHILE

SCFA IAC 8
RNAV (GNSS) Y Rwy 19

APP ANTOFAGASTA RADAR Antofagasta Approach	120.9 / 119.3	TORRE ANTOFAGASTA Antofagasta Tower	118.1	CONTROL TERRESTRE Ground Control	121.9
RNAV	FINAL APCH CRS 189°	MNM ALT ESPAM 2700'	LNAV MDA(H) 1180' (725')	AD Elev. THR 19 Elev	455' 455'
APCH FRUSTRADA: Ascenso 4500' directo PABRA, ingrese HLDG 009° izquierdo o según autorización ATC. Missed Apch: Climb to 4500' direct PABRA, enter on HLDG 009° left or according to ATC clearance.					7200 FT MSA 25 NM RW19



A-RQDQME-AC	DIRECTO RWY 19 <i>Straight in RWY 19</i>	CIRCULANDO OESTE <i>Circling West</i>	ALTN <i>Alternate Minimums</i>
	LNAV MDA 1180' (725')		
A	1.6 Km	1240' (785')	VER PAG. GEN 2.19
B		1300' (845')	
C		1460' (1005')	
D			

-Requiere aprobación RNP APCH.
-RNP APCH approval RQRD.

Veloc. Terrestre Kts	80	100	120	140	160
Angulo DES 3,5°	496'	619'	743'	867'	991'
MAPt en RW19					

DASA / SECCION AIS-WAP