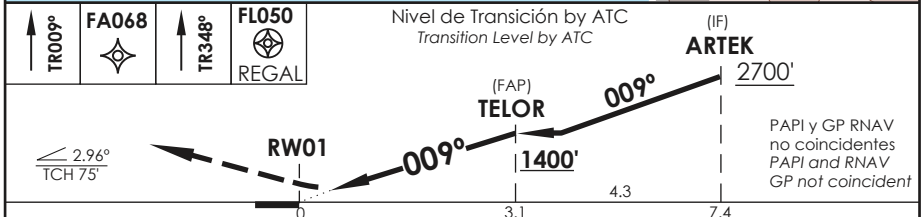
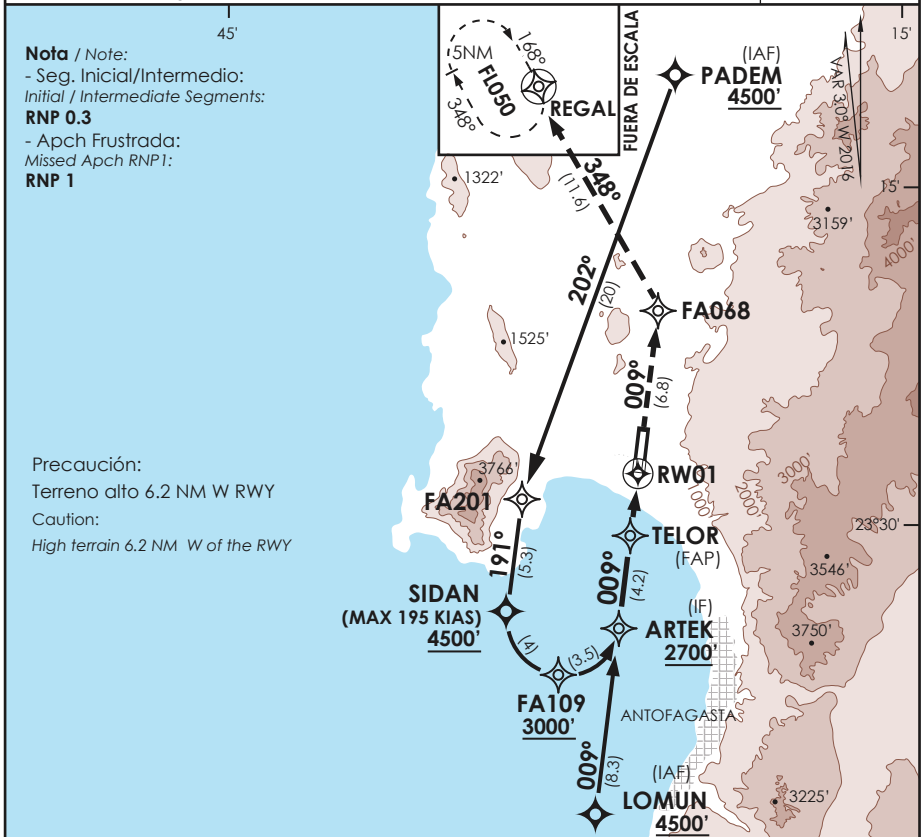


AP. ANDRÉS SABELLA
ANTOFAGASTA - CHILE

SCFA IAC 9
RNAV (RNP) Z Rwy 01

APP ANTOFAGASTA RADAR Antofagasta Approach	120.9 / 119.3	TORRE ANTOFAGASTA Antofagasta Tower	118.1	CONTROL TERRESTRE Ground Control	121.9
RNAV	FINAL APCH CRS 009°	MNM ALT TELOR 1400'	DA/H ver mínimos DA/H refer to minimums	AD Elev. THR 01 Elev	455' 352'
APCH FRUSTRADA: Ascenso en TR009° directo a FA068, viraje izquierda directo a REGAL, ingrese y ascienda en HLDG a FLO50 o según autorización ATC.					7200 FT
Missed Apch: Climb on TR009° direct to FA068, turn left direct to REGAL, enter and climb in hold to FLO50 or according to ATC clearance.					
					MSA 25 NM RW01



A B C D	DIRECTO RWY 01	Straight in RWY 01					RNP AR RWY 01 SCFA: Requiere RF. Para sistemas Baro VNAV no compensados proc NA bajo 7°C o sobre 54°C para CAT A/B/C, y bajo 7°C o sobre 45°C para CAT D. Autorización requerida de acuerdo a DAN 06-22. RF required. For uncompensated Baro VNAV systems procedure NA below 7°C or above 54°C for CAT A/B/C, and below 7°C or above 45°C for CAT D. Authorization required according to DAN 06-22.
	RNP 0.1	DA 740' (388')	RNP 0.30			DA 880' (521')	
	2.0 Km	2.4 Km					
	Veloc. Terrestre Kts	80	100	120	140	160	
Angulo DES 2.96°	419'	524'	628'	733'	838'	MNM ALTN RNP 0.30: YER PAG GEN 2.19 See pag 2.19 RQR AUTORIZACIÓN ESPECIAL PARA ACFT Y CREW SPECIAL ACFT AND AIRCREW AUTHORIZATION RQRD	
MAPt en DA							

DASA / SECCION AIS-MAP