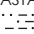
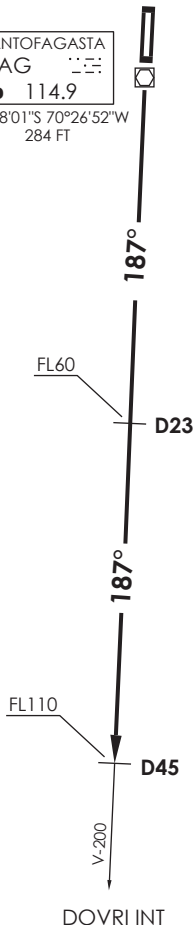


VAR 3.3° W 2017

ANTOFAGASTA  
 FAG   
 D 114.9  
 23°28'01"S 70°26'52"W  
 284 FT

**ANTOFAGASTA**

GNDC 121.9  
 TWR 118.1  
 RDR 120.9 / 119.3



MNM Razón ASC:  
 MNM Climb Rate:  
 250 FT/NM TIL FL110

Altitud de Transición 4500FT  
 Transition Altitude 4500FT

No se ajusta a escala / Not to scale

**LAPOR 1**

**DEP RWY 19:** Ascender en R187 FAG VOR/DME, cruzar D23 FL60 o superior, cruzar D45 FL110 o superior para interceptar AWY, luego según autorización ATC.

**TAKE-OFF RWY 19:** Climb on R187 FAG VOR/DME, cross D23 at or above FL60, cross D45 at or above FL110 to intercept AWY, then according to ATC clearance.

DASA / SECCION AIS-MAP