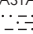
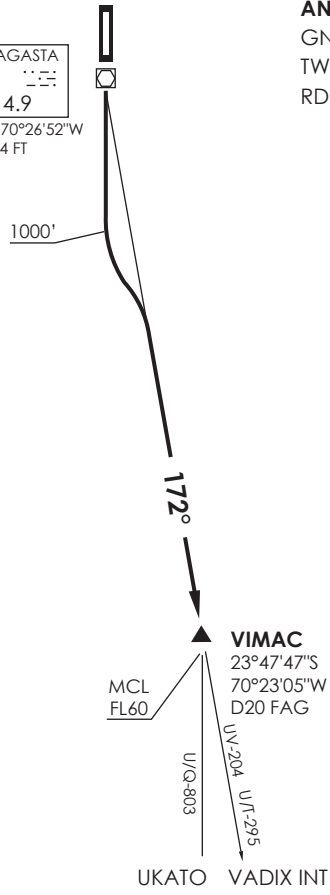


VAR 3.3° W 2017

ANTOFAGASTA
 FAG 
D 114.9
 23°28'01"S 70°26'52"W
 284 FT

ANTOFAGASTA
 GNDC 121.9
 TWR 118.1
 RDR 120.9 / 119.3



MNM Razón ASC:
 MNM Climb Rate:
 300 FT/NM TIL FL60

Altitud de Transición 4500FT
 Transition Altitude 4500FT

No se ajusta a escala / Not to scale

VIMAC 3

DEP RWY 19: Ascender en RWY HDG hasta 1000FT posterior viraje izquierda para interceptar y ascender en R172 FAG VOR/DME. Cruzar D20 FAG VOR FL60 o superior, luego según autorización ATC.

TAKE-OFF RWY 19: Climb on RWY HDG until 1000FT, then turn left to intercept and climb on R172 FAG VOR/DME. Cross D20 FAG VOR at or above FL60, then according to ATC clearance.

DASA / SECCION AIS-MAP