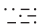


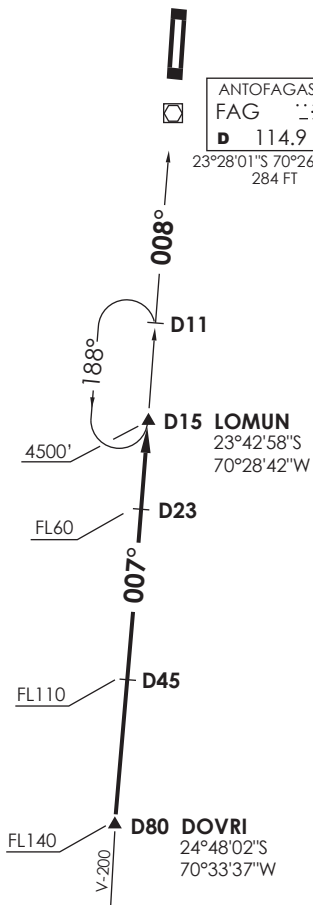
VAR 3.0° W 2016

**ANTOFAGASTA**

RDR 120.9 / 119.3  
 TWR 118.1

ANTOFAGASTA  
 FAG   
 D 114.9

23°28'01"S 70°26'52"W  
 284 FT



Nivel de Transición by ATC  
 Transition Level by ATC

No se ajusta a escala / Not to scale

**STAR DOVRI 2C**

En AWY V-200, cruzar DOVRI FL140 o superior, cruzar D45 S FAG FL110 o superior, D23 S FL60 o superior, viraje derecha directo LOMUN INT 4500FT o superior, luego según autorización ATC.

On AWY V-200, cross DOVRI at or above FL140, cross D45 S FAG at or above FL110, D23 S at or above FL60, right turn direct to LOMUN INT at or above 4500FT, then according to ATC clearance.

DASA / SECCION AIS-MAP