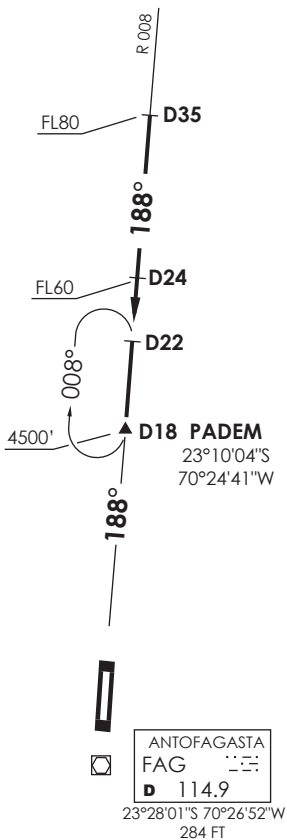


VAR 3.0° W 2016



ANTOFAGASTA

RDR 120.9 / 119.3

TWR 118.1

Nivel de Transición by ATC

Transition Level by ATC

No se ajusta a escala / Not to scale

STAR BORO 6

Establecido en R008 (TR188°) FAG VOR/DME, cruzar D35 N FAG FL80 o superior, cruzar D24 N FAG FL60 o superior, cruzar PADEM INT 4500FT o superior, luego según autorización ATC.

Established on R008 (TR188°) FAG VOR/DME, cross D35 N FAG at or above FL80, cross D24 N FAG at or above FL60, cross PADEM INT at or above 4500FT, then according to ATC clearance.