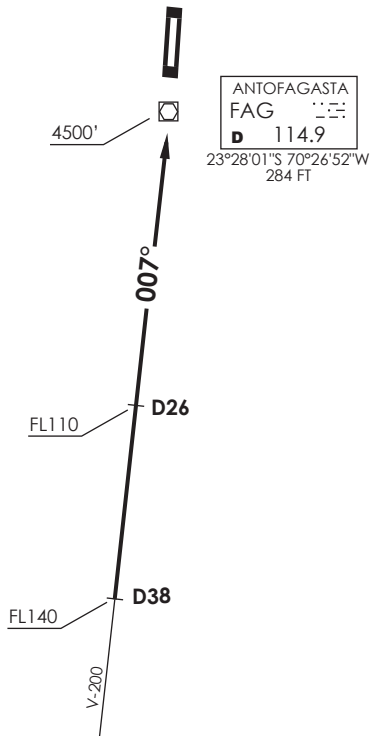


VAR 3.0° W 2016



ANTOFAGASTA

RDR 120.9 / 119.3
TWR 118.1

Nivel de Transición by ATC
Transition Level by ATC

No se ajusta a escala / Not to scale

STAR CEMOR 2

En AWY V-200, abandonar MEA en D38 S FAG VOR/DME, cruzar D26 S FAG FL110 o superior, cruzar FAG VOR/DME 4500FT o superior, luego según autorización ATC.

On AWY V-200, leave MEA on D38 S FAG VOR/DME, cross D26 S FAG at or above FL110, cross FAG VOR/DME at or above 4500FT, then according to ATC clearance.

DASA / SECCION AIS-MAP