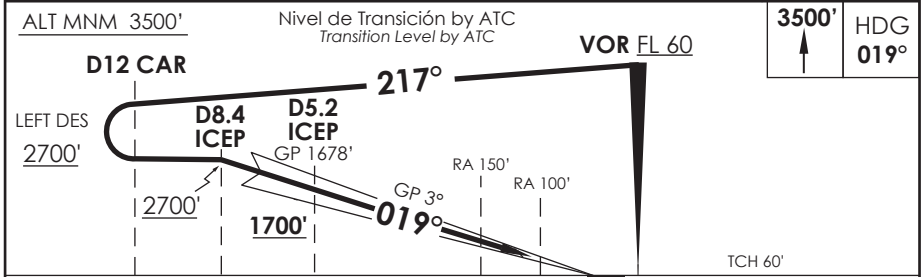
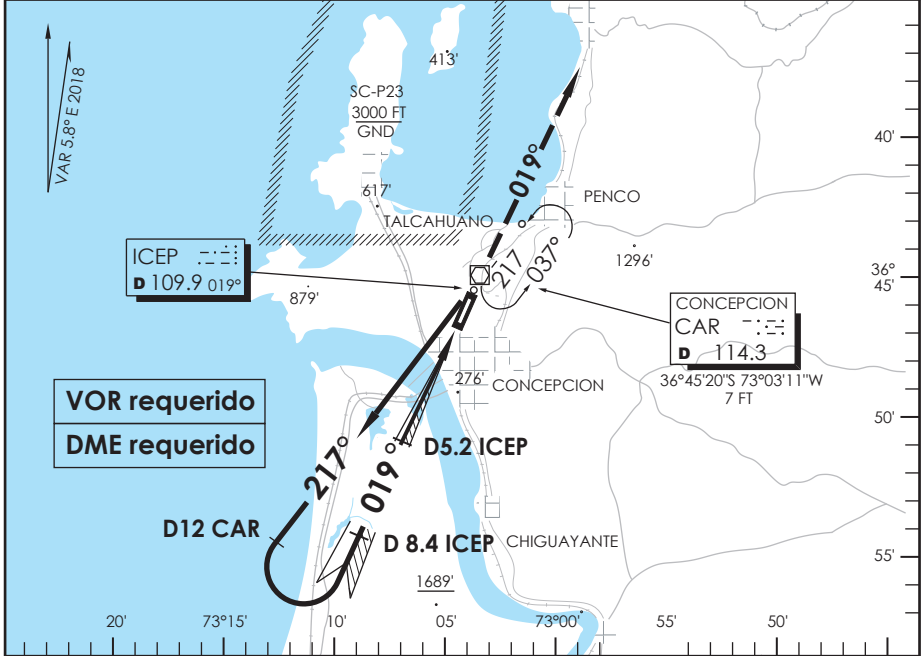


AD. CARRIEL SUR (INTL O/R) CONCEPCION - CHILE

SCIE IAC 10
ILS W RWY 02

APP CONCEPCION Concepción Approach		124.2	TORRE CONCEPCION Concepción Tower		118.6	CONTROL TERRESTRE Ground Control		121.9
LOC ICEP 109.9	FINAL APCH CRS 019°	MNM ALT D5.2 ICEP 1700'	CAT II & III A/B De acuerdo a CAT According to CAT		AD Elev. 26'	THR 02 Elev. 26'		 4300 FT MSA 25 NM CAR
APCH FRUSTRADA: Ascenso 3500' HDG 019°, luego según autorización ATC. Missed APCH: Climb to 3500' on HDG 019°, then according to ATC clearance.								



CATEGORIA	** DIRECTO RWY 02 Straight in RWY 02				Aeronaves operando "FAIL PASSIVE" DA(H) 76'(50 FT) * Aircraft operating "FAIL PASSIVE" DA(H) 76'(50 FT) MNM ALTN VER PAG GEN 2.19 ALTN MNM See pag 2.19
	ILS CAT III-B *		ILS CAT III-A *		
	RA 100' DA 126'(100')		RA 150' DA 176'(150')		
	A	RVR 50m	RVR 200m	RVR 350m	
B					
C					
D					

Se requiere certificación de ACFT y Habilitación de Tripulación Especial: DAN 06-02, 06-12
 Special Aircraft and aircrew certification required: DAN 06-02, 06-12

Veloc. Terrestre Kts	80	100	120	140	160	** WO ICEP DME PROC NA
GP 3° FPM	425'	531'	637'	743'	849'	PROC NOT AUTHORIZED WITHOUT ICEP DME

CAMBIO: Nuevo PROC
 Change: New PROC

DGAC NOTAM A0386

01 MARZO 2018