
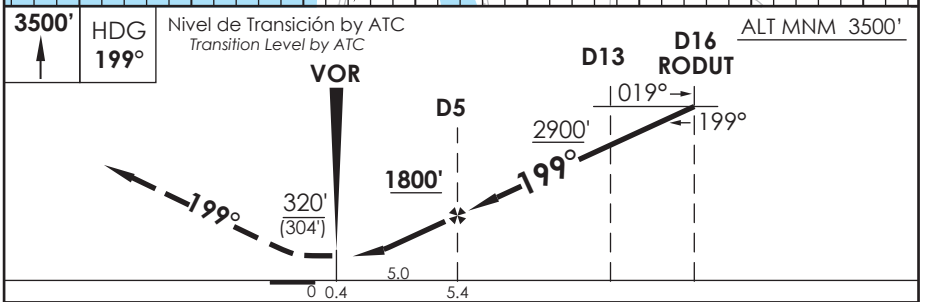


AD. CARRIEL SUR (INTL O/R) CONCEPCION - CHILE

SCIE IAC 3
VOR Z RWY 20

APP CONCEPCION RADAR Concepción RADAR Approach 124.2		TORRE CONCEPCION Concepción Tower 118.6		CONTROL TERRESTRE Ground Control 121.9	
VOR CAR 114.3	FINAL APCH CRS 199°	MNM ALT D5 1800'	MDA (H) 320' (304')	AD Elev. THR 20 Elev. 26' 16'	 4300 FT MSA 25 NM CAR
APCH FRUSTRADA: Ascenso 3500' HDG 199° dentro de D15 según autorización ATC. Missed Apch: Climb to 3500' on HDG 199° within D15 according to ATC clearance.					



CATEGORIA	DIRECTO RWY 20 <i>Straight in RWY 20</i>	CIRCULANDO OESTE Circling West	ALTN Alternate Minimums	
	MDA 320' (304')			
A	1.6 Km	560' (534')	VER PAG. GEN 2.19	
B		1.6 Km		640' (614')
C				2.8 Km
D				3.2 Km

Veloc. Terrestre Kts	80	100	120	140	160
Angulo DES 3.26° FPM	461'	577'	692'	808'	923'
FAF to MAP 5.0 NM	3:45	3:00	2:30	2:08	1:52

DASA / SECCION IAS-MAP