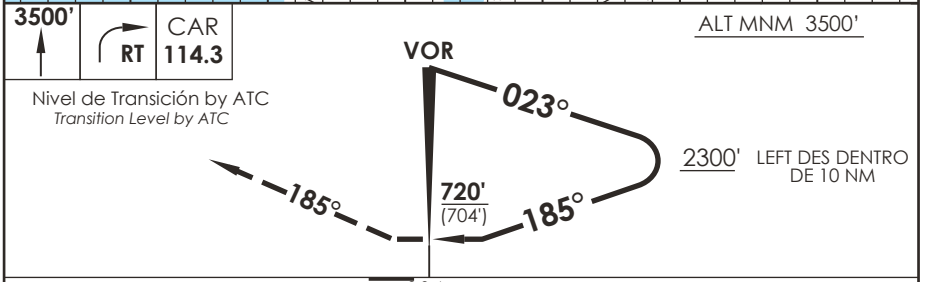


AD. CARRIEL SUR (INTL O/R) CONCEPCION - CHILE

SCIE IAC 5
VOR Y RWY 20

APP CONCEPCION RADAR Concepción RADAR Approach 124.2		TORRE CONCEPCION Concepción Tower 118.6		CONTROL TERRESTRE Ground Control 121.9	
VOR CAR 114.3	FINAL APCH CRS 185°	WO FAF	MDA (H) 720' (704')	AD Elev. THR 20 Elev. 26'	 MSA 25 NM CAR
APCH FRUSTRADA: Ascenso 3500' HDG 185°, viraje derecha directo CAR VOR, ingrese a HLDG 023° izquierdo. Missed Apch: Climb to 3500' on HDG 185°, right turn direct to CAR VOR, enter on HLDG 023° left.					



CATEGORIA	DIRECTO RWY 20 <i>Straight in RWY 20 *</i>		CIRCULANDO OESTE Circling West		ALTN Alternate Minimums
	MDA 720' (704')				
A	1.6 Km		720' (694')	1.6 Km	VER PAG. GEN 2.19
B				3.2 Km	
C	3.2 Km			3.6 Km	
D	3.6 Km				
* Desalineado 14° respecto a RCL / Offset 14° from RWY center line					

DASA / SECCION A3-MAP