
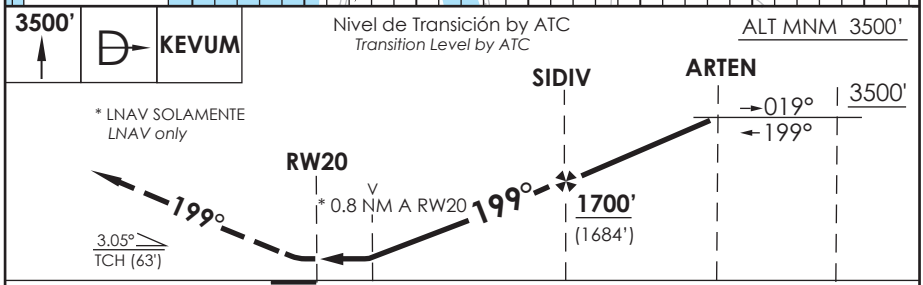


AD. CARRIEL SUR (INTL O/R) CONCEPCION - CHILE

SCIE IAC 7 RNAV (GNSS) RWY 20

APP CONCEPCION Concepción Approach		124.2	TORRE CONCEPCION Concepción Tower		118.6	CONTROL TERRESTRE Ground Control		121.9
RNAV	FINAL APCH CRS 199°	MNM ALT SIDIV 1700' (1684')	LNAV/VNAV DA(H) 270' (254')		AD Elev. 26' THR 20 Elev. 16'		 4300 FT MSA 25 NM RWY20	
APCH FRUSTRADA: Ascenso 3500' directo KEVUM, ingreso HLDG 019° izquierda o según autorización ATC. Missed Apch: Climb to 3500' direct to KEVUM, enter on HLDG 019° left or according to ATC clearance.								



C A T E G O R I A	DIRECTO RWY 20 <i>Straight in RWY 20</i>		CIRCULANDO OESTE Circling West	ALTN Alternate Minimums	
	LNAV/VNAV DA 270' (254')	LNAV MDA 320' (304')			
	A	1.6 Km	1.6 Km	560' (534')	VER PAG. GEN 2.19
	B			640'	
C	(614')				
D			3.2 Km		

- Requiere aprobación RNP APCH. - RNP APCH approval RQRD.						Para sistemas Baro VNAV no compensados proc NA bajo -10°C o sobre 47°C. For uncompensated Baro VNAV systems procedure NA below -10°C or above 47°C.					
Veloc. Terrestre Kts	80	100	120	140	160						
Angulo DES 3.05° FPM	432'	540'	648'	755'	863'						
MAPt en RW20											

DASA / SECCION IAS-MAP