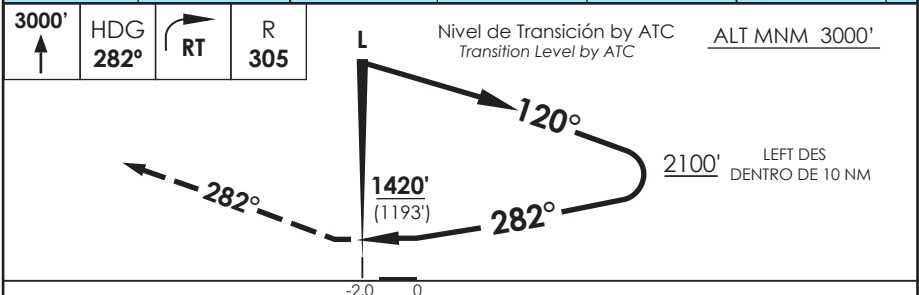
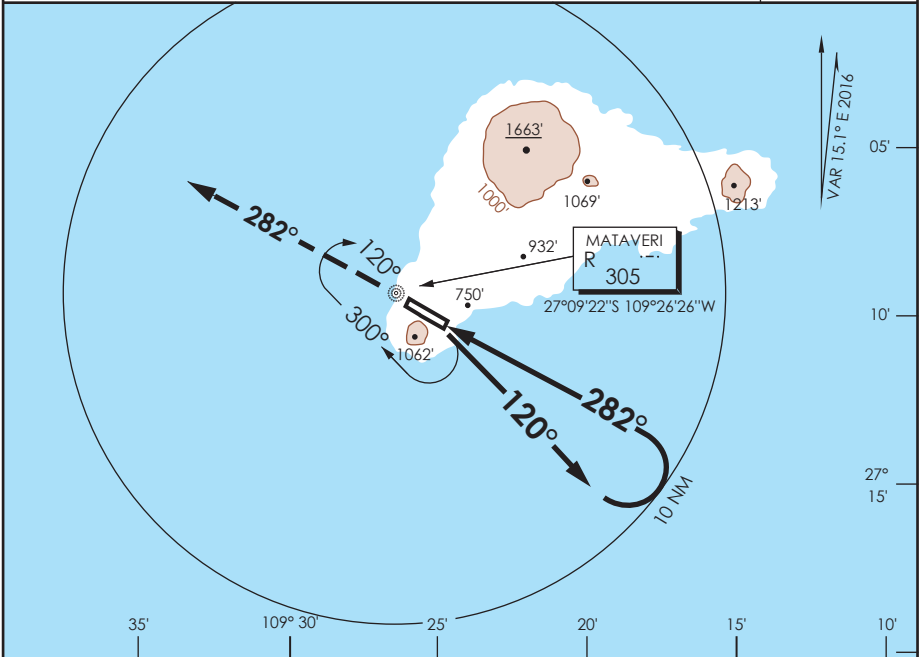


# AP. MATAVERI ISLA DE PASCUA - CHILE

SCIP IAC 10  
NDB Y Rwy 28

APP PASCUA Pascua Approach	127.3/118.1	TORRE PASCUA Pascua Tower	118.1	CONTROL TERRESTRE Ground Control	121.9
L "R" <b>305</b>	FINAL APCH CRS <b>282°</b>	<b>WO FAF</b>	MDA(H) <b>1420' (1193')</b>	AD Elev. THR 28 Elev. <b>227'</b>	 3000 FT MSA 25 NM IPA
APCH FRUSTRADA: Ascenso a 3000' HDG 282° L "R", viraje derecha directo L "R" 3000 FT, luego según autorización ATC. Missed Apch: Climb to 3000' on HDG 282° "R", right turn direct "R" L 3000 FT, then according to ATC clearance.					



CATEGORIA	DIRECTO RWY 28 Straight in RWY 28	CIRCULANDO Circling	ALTN Alternate Minimums
	MDA <b>1420' (1193')</b>		
	A 2.0 Km	NA	(1193') 4.8 Km
	B 2.4 Km		
C 4.8 Km			
D			

\* MAPT pasado RWY 28.  
\* MAPT beyond RWY 28.