
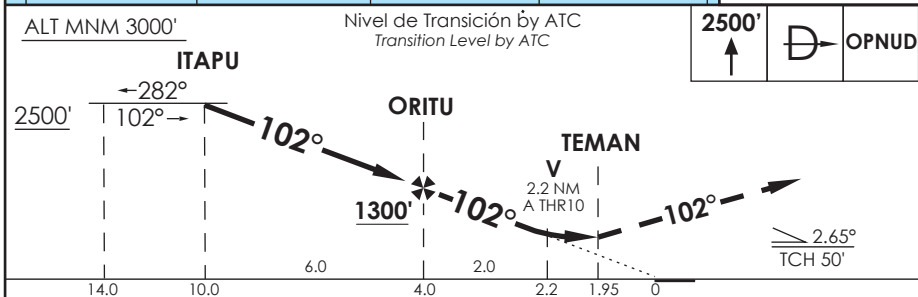
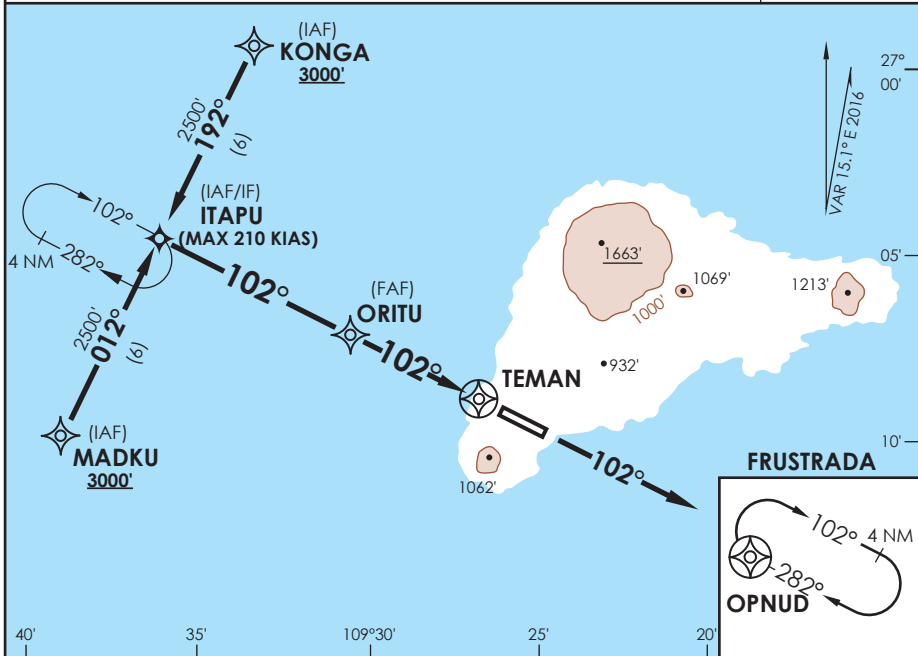


AP. MATAVERI
ISLA DE PASCUA - CHILE

SCIP IAC 11
RNAV (GNSS) Z Rwy 10

APP PASCUA Pascua Approach	127.3/118.1	TORRE PASCUA Pascua Tower	118.1	CONTROL TERRESTRE Ground Control	121.9
RNAV	FINAL APCH CRS 102°	MNM ALT ORITU 1300'	MDA(H) 800' (673')	AD Elev. THR 10 Elev. 227'	 MSA 25 NM RW10
APCH FRUSTRADA: Ascenso 2500' directo a OPNUD e ingrese a HLDG 282° derecha o según autorización ATC. Missed Apch: Climb to 2500' direct to OPNUD and enter HLDG 282° right or according to ATC clearance.					



C A T E G O R I A	DIRECTO RWY 10 <i>Straight in RWY 10</i>		CIRCULANDO Circling	ALTN Alternate Minimums
	LNAV MDA 800' (673')			
	CON SSALF	WO SSALF		
A	1.2 Km	1.6 Km	N A	(800') 3.2 Km
B				
C	2.8 Km	3.2 Km		
D				


-Requiere aprobación RNP APCH.
 -RNP APCH approval RQRD.

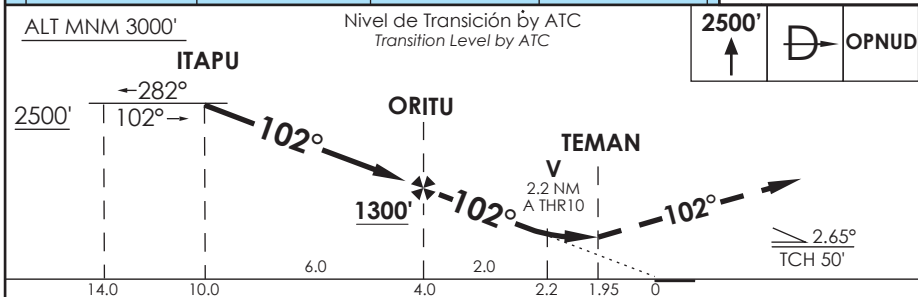
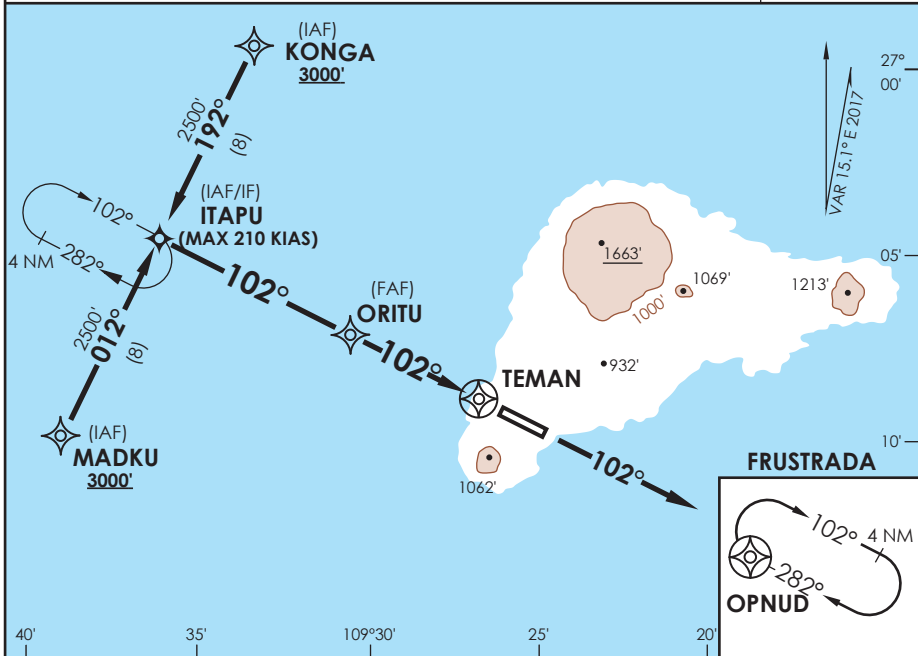
Veloc. Terrestre Kts	80	100	120	140	160
Angulo DES 2,65° FPM	375'	469'	562'	656'	750'
MAPT en TEMAN					

DASA / SECCION AIS-MAP

AP. MATAVERI ISLA DE PASCUA - CHILE

SCIP IAC 11
RNAV (GNSS) Z Rwy 10

APP PASCUA Pascua Approach	127.3/118.1	TORRE PASCUA Pascua Tower	118.1	CONTROL TERRESTRE Ground Control	121.9
RNAV	FINAL APCH CRS 102°	MNM ALT ORITU 1300'	MDA(H) 800' (673')	AD Elev. THR 10 Elev. 227'	 MSA 25 NM RW10
APCH FRUSTRADA: Ascenso 2500' directo a OPNUD e ingrese a HLDG 282° derecha o según autorización ATC. Missed Apch: Climb to 2500' direct to OPNUD and enter HLDG 282° right or according to ATC clearance.					



C A T E G O R Í A	DIRECTO RWY 10 <i>Straight in RWY 10</i>		CIRCULANDO Circling	ALTN Alternate Minimums
	LNAV MDA 800' (673')			
	CON SSALF	WO SSALF		
A	1.2 Km	1.6 Km	N A	VER PAG. GEN 2.19
B				
C	2.8 Km	3.2 Km		
D				

-Requiere aprobación RNP APCH.
-RNP APCH approval RQRD.

Veloc. Terrestre Kts	80	100	120	140	160
Angulo DES 2,65° FPM	375'	469'	562'	656'	750'
MAPT en TEMAN					

DASA / SECCION AIS-MAP