
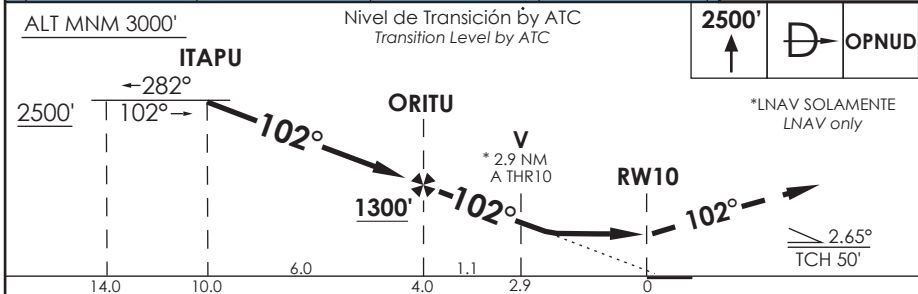
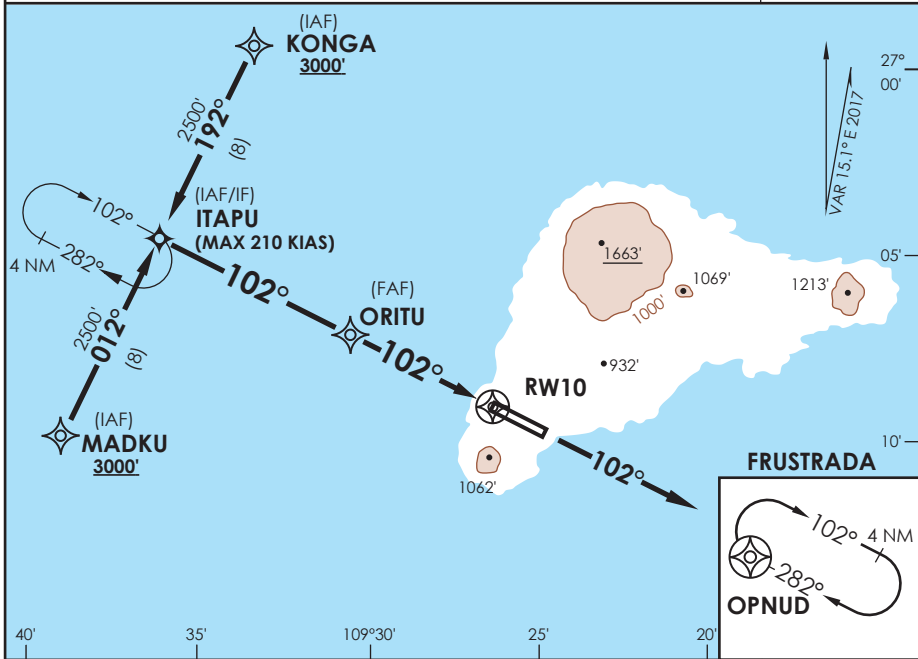


AP. MATAVERI ISLA DE PASCUA - CHILE

SCIP IAC 12 RNAV (GNSS) Y Rwy 10

APP PASCUA Pascua Approach	127.3/118.1	TORRE PASCUA Pascua Tower	118.1	CONTROL TERRESTRE Ground Control	121.9
RNAV	FINAL APCH CRS 102°	MNM ALT ORITU 1300'	LNAV/VNAV DA(H) 820'(693')	AD Elev. THR 10 Elev.	227' 127'
APCH FRUSTRADA: Ascenso 2500' directo a OPNUD e ingrese a HLDG 282° derecha o segun autorización ATC.					 MSA 25 NM RW10
Missed Apch: Climb to 2500' direct to OPNUD and enter HLDG 282° right or according to ATC clearance.					



CATEGORIA	DIRECTO RWY 10 <i>Straight in RWY 10</i>				CIRCULANDO <i>Circling</i>	ALTN <i>Alternate Minimums</i>
	LNAV/VNAV DA 820' (693')		LNAV MDA 1000' (873')			
	SSALF	WO SSALF	SSALF	WO SSALF		
A	1.2 Km	1.6 Km	1.2 Km	1.6 Km	N A	VER PAG. GEN 2.19
B			1.6 Km	2.0 Km		
C	2.8 Km	3.2 Km	3.6 Km	4.0 Km		
D						

-Requiere aprobación RNP APCH. -RNP APCH approval RQRD.					Para sistemas Baro VNAV no compensados proc NA bajo 0°C o sobre 54°C.					
Veloc. Terrestre Kts	80	100	120	140	160	For uncompensated Baro VNAV systems procedure NA below 0°C or above 54°C.				
Angulo DES 2,65° FPM	375'	469'	562'	656'	750'					
MAPi en RW10										

DASA / SECCION AIS-MAP