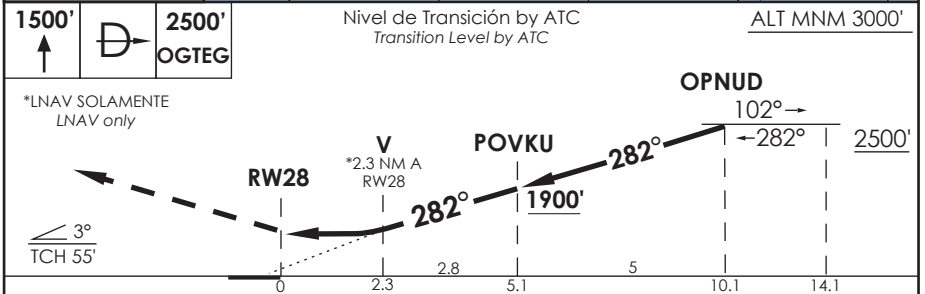
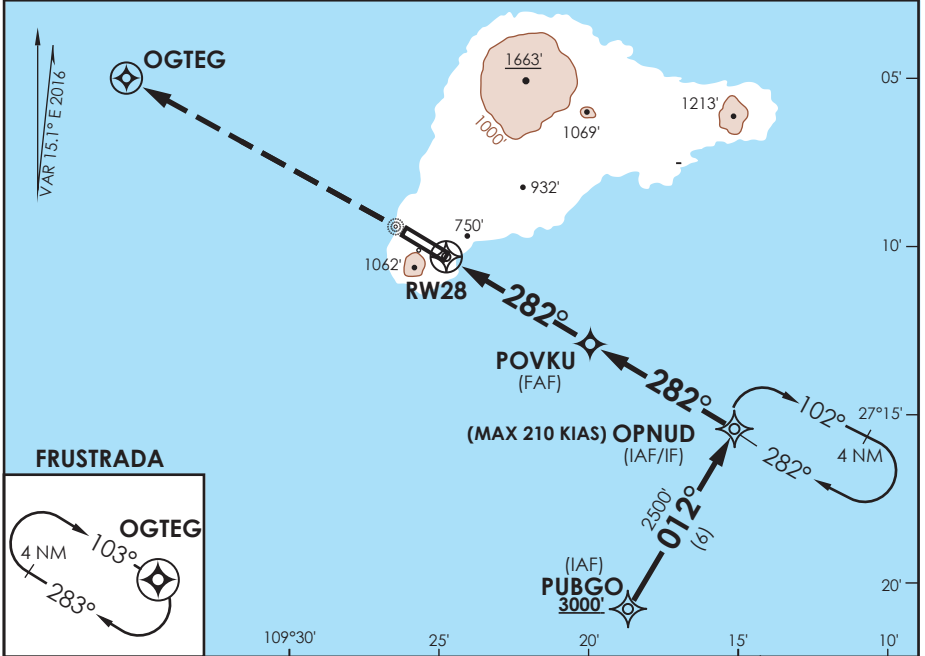


AP. MATAVERI  
**ISLA DE PASCUA - CHILE**

SCIP IAC 13  
**RNAV (GNSS) Rwy 28**

APP PASCUA Pascua Approach	127.3/118.1	TORRE PASCUA Pascua Tower	118.1	CONTROL TERRESTRE Ground Control	121.9
<b>RNAV</b>	FINAL APCH CRS <b>282°</b>	MNM ALT POVKU <b>1900'</b>	LNAV/VNAV DA <b>890' (663')</b>	AD Elev. THR 28 Elev.	<b>227'</b> <b>227'</b>
APCH FRUSTRADA: ASC en RWY HDG a 1500', luego directo a OGTEG en ascenso para 2500' e ingrese a HLDG 103° derecha o según autorización ATC. Missed Apch: Climb on RWY HDG to 1500', then direct to OGTEG climbing to 2500' and enter HLDG 103° right or according to ATC clearance.					3000 FT MSA 25 NM RW28



C B A	DIRECTO RWY 28 <i>Straight in RWY 28</i>		CIRCULANDO <i>Circling</i>	ALTN <i>Alternate Minimums</i>	
	LNAV/VNAV DA <b>890' (663')</b>	LNAV MDA <b>1020' (793')</b>		LNAV/VNAV	LNAV
A	1.6 Km	1.6 Km	N A	(800')	(800')
B		2.0 Km			3.2 Km
C	3.2 Km	3.6 Km		3.2 Km	(800')
D				3.6 Km	


-Requiere aprobación RNP APCH. -RNP APCH approval RQRD.			Para sistemas Baro VNAV no compensados proc NA bajo 0°C o sobre 54°C. For uncompensated Baro VNAV systems procedure NA below 0°C or above 54°C.		
Veloc. Terrestre Kts	80	100	120	140	160
Angulo DES 3° FPM	425'	531'	637'	743'	849'
MAPT en RW28					

DASA / SECCION AIS-MAP

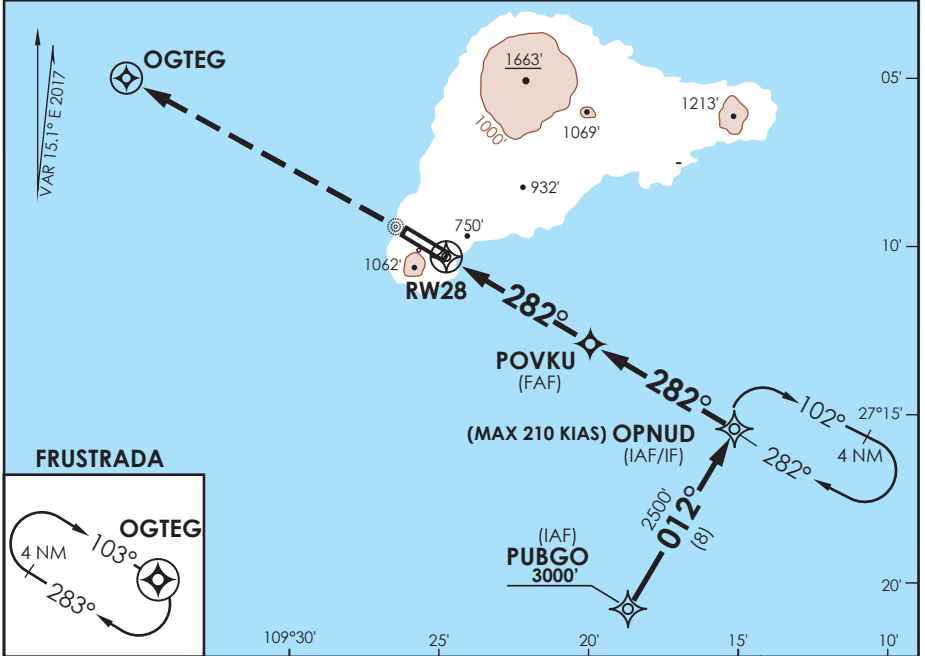
AP. MATAVERI  
**ISLA DE PASCUA - CHILE**

SCIP IAC 13  
**RNAV (GNSS) Rwy 28**

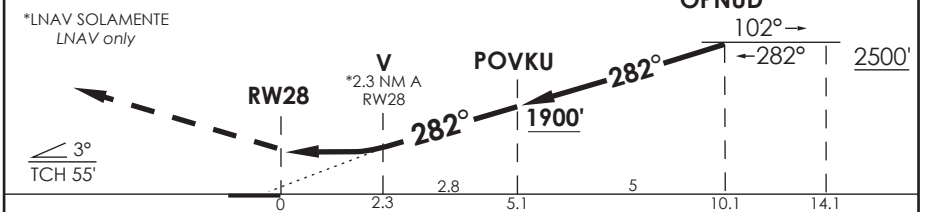
APP PASCUA Pascua Approach	127.3/118.1	TORRE PASCUA Pascua Tower	118.1	CONTROL TERRESTRE Ground Control	121.9
-------------------------------	-------------	------------------------------	-------	-------------------------------------	-------

<b>RNAV</b>	FINAL APCH CRS <b>282°</b>	MNM ALT POVKU <b>1900'</b>	LNAV/VNAV DA <b>890' (663')</b>	AD Elev. THR 28 Elev. <b>227'</b>	 MSA 25 NM RW28
APCH FRUSTRADA: ASC en RWY HDG a 1500', luego directo a OGTEG en ascenso para 2500' e ingrese a HLDG 103° derecha o según autorización ATC. <i>Missed Apch: Climb on RWY HDG to 1500', then direct to OGTEG climbing to 2500' and enter HLDG 103° right or according to ATC clearance.</i>					

APCH FRUSTRADA: ASC en RWY HDG a 1500', luego directo a OGTEG en ascenso para 2500' e ingrese a HLDG 103° derecha o según autorización ATC.  
*Missed Apch: Climb on RWY HDG to 1500', then direct to OGTEG climbing to 2500' and enter HLDG 103° right or according to ATC clearance.*



1500'	2500'	Nivel de Transición by ATC Transition Level by ATC	ALT MNM 3000'
-------	-------	-------------------------------------------------------	---------------



C A	DIRECTO RWY 28 <i>Straight in RWY 28</i>		CIRCULANDO Circling	ALTN Alternate Minimums	
	LNAV/VNAV DA 890' (663')	LNAV MDA 1020' (793')			
A	1.6 Km	1.6 Km	N A	VER PAG. GEN 2.19	
B		2.0 Km			
C		3.2 Km			3.6 Km
D					

-Requiere aprobación RNP APCH. -RNP APCH approval RQRD.			Para sistemas Baro VNAV no compensados proc NA bajo 0°C o sobre 54°C. For uncompensated Baro VNAV systems procedure NA below 0°C or above 54°C.		
Veloc. Terrestre Kts	80	100	120	140	160
Angulo DES 3° FPM	425'	531'	637'	743'	849'
MAPT en RW28					

DASA / SECCION AIS-MAP