
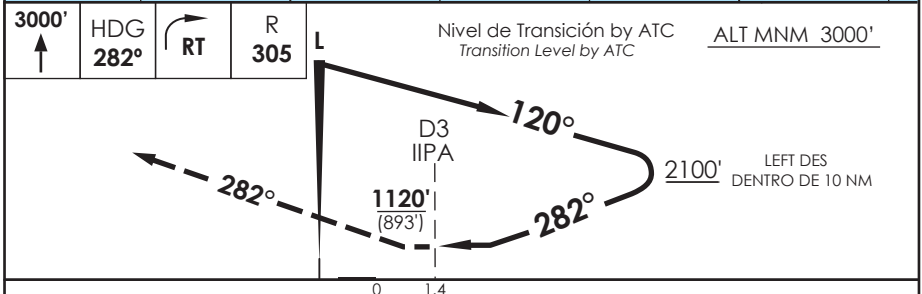
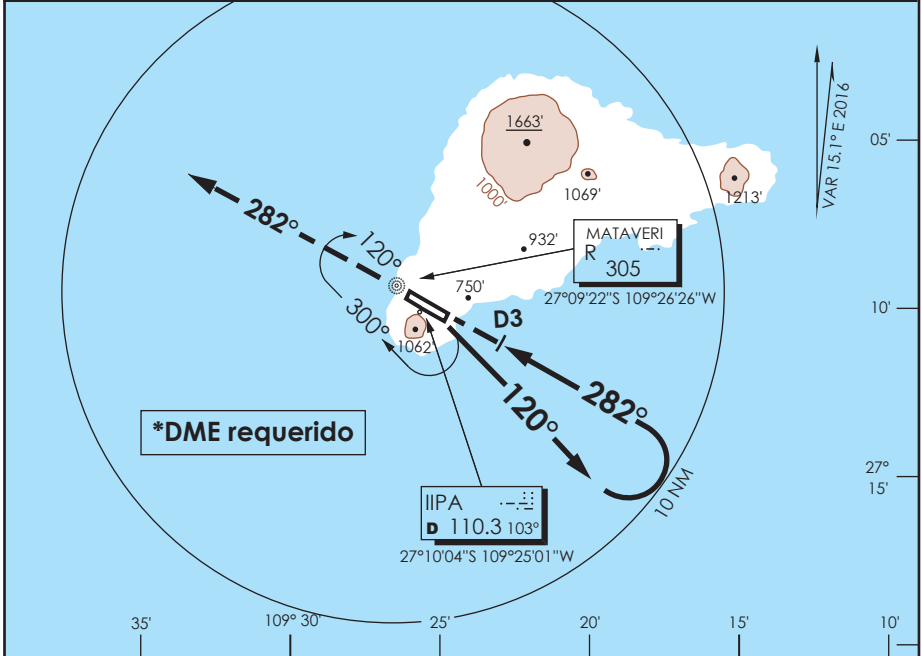


# AP. MATAVERI ISLA DE PASCUA - CHILE

SCIP IAC 9  
NDB Z Rwy 28

APP PASCUA Pascua Approach	127.3/118.1	TORRE PASCUA Pascua Tower	118.1	CONTROL TERRESTRE Ground Control	121.9
L "R" <b>305</b>	FINAL APCH CRS <b>282°</b>	<b>WO FAF</b>	MDA(H) <b>1120' (893')</b>	AD Elev. THR 28 Elev. <b>227'</b>	 3000 FT MSA 25 NM IPA
APCH FRUSTRADA: Ascenso a 3000' HDG 282° L "R", viraje derecha directo L "R" 3000 FT, luego según autorización ATC. Missed Apch: Climb to 3000' on HDG 282° "R" L, right turn direct "R" L 3000 FT, then according to ATC clearance.					



CATEGORÍA	DIRECTO RWY 28 <i>Straight in RWY 28</i>	CIRCULANDO Circling	ALTN Alternate Minimums
	MDA <b>1120' (893')</b>		
A	2.0 Km	NA	(893') 4.0 Km
B			
C	4.0 Km		
D			

\* Utiliza DME IIPA ILS.  
\* Uses ILS IIPA DME.

DASA / SECCION AIS-MAP