
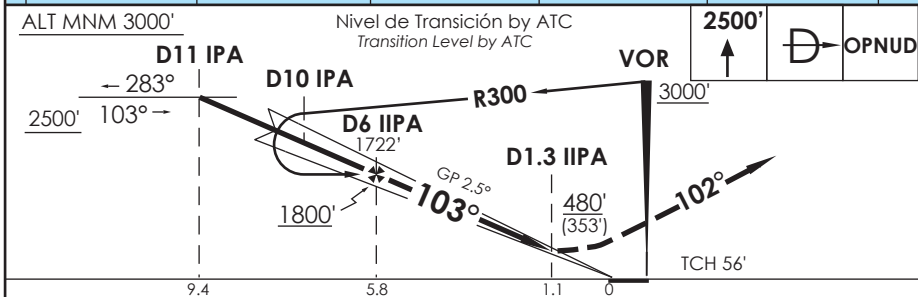
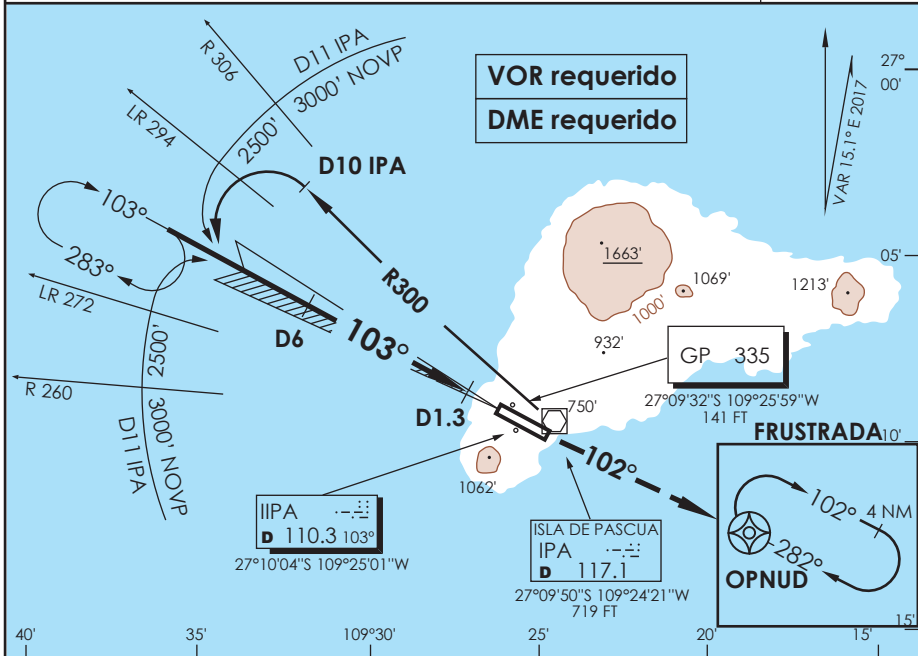


AP. MATAVERI ISLA DE PASCUA - CHILE

SCIP IAC 1
ILS Z Rwy 10

APP PASCUA Pascua Approach		127.3/118.1	TORRE PASCUA Pascua Tower		118.1	CONTROL TERRESTRE Ground Control		121.9
LOC IIPA 110.3	FINAL APCH CRS 103°	MNM ALT D 6.0 1800'	DA(H) 480'(353')	AD Elev. THR 10 Elev. 227'	127'	 MSA 25 NM IPA		
APCH FRUSTRADA: Ascenso 2500' directo OPNUD e ingrese a HLDG 282° derecha o según autorización ATC. Missed Apch: Climb to 2500' direct to OPNUD and enter HLDG 282° right or according to ATC clearance.								



C A T E G O R I A	DIRECTO RWY 10 <i>Straight in RWY 10</i>				CIRCULANDO Circling	ALTN Alternate Minimums
	* ILS DA 480' (353')		* LOC WO GP MDA 580' (453')			
	SSALF	WO SSALF	ALS	WO ALS		
A	1.2 Km	1.6 Km	1.2 Km	1.6 Km	NA	VER PAG. GEN 2.19
B						
C			1.6 Km	2.0 Km		
D			2.0 Km	2.4 Km		

LOC desalineado 0.9° respecto a eje de RWY / LOC offset 0.9° from RWY center line
 * WO IIPA DME PROC NA / Procedure not authorized without IIPA DME

Veloc. Terrestre Kts	80	100	120	140	160
GP 2.5° FPM	354'	442'	531'	619'	707'
Dist. FAF α MAPT 4.7 NM	3:32	2:49	2:21	2:01	1:46

CAMBIO: VIS CAT D / VAR
Change: VIS CAT D / VAR

DGAC AMDT 81

17 AGOSTO 2017

DASA / SECCION AIS-MAP