
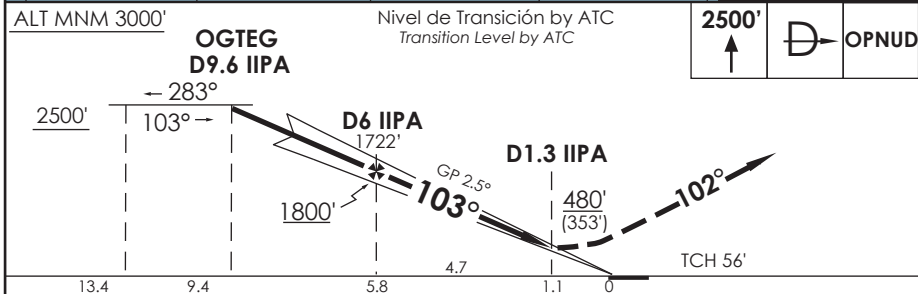
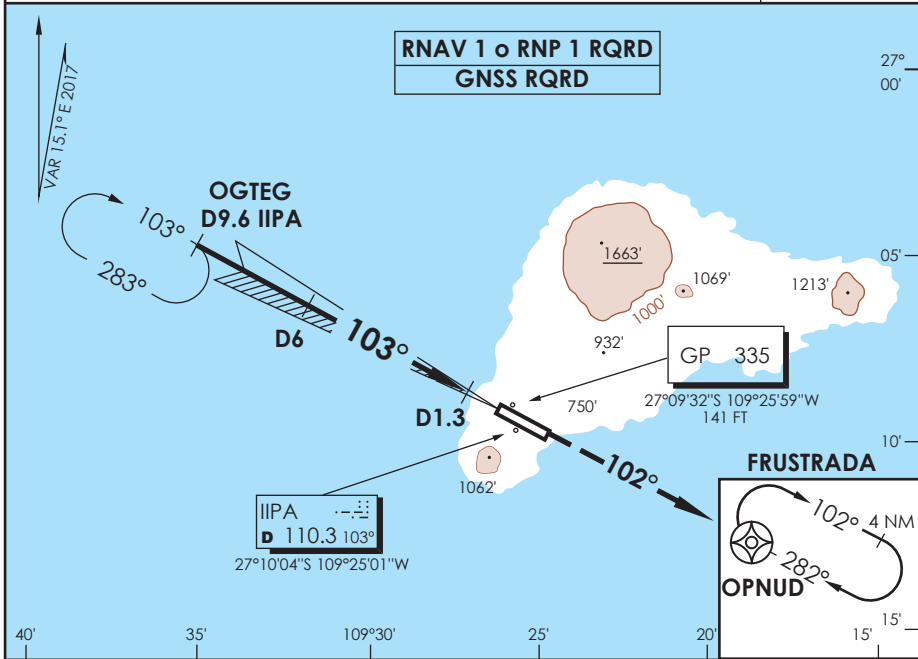


AP. MATAVERI  
**ISLA DE PASCUA - CHILE**

SCIP IAC 3  
**ILS X Rwy 10**

|   |                               |                               |                              |                          |             |  |  |       |
|---|-------------------------------|-------------------------------|------------------------------|--------------------------|-------------|--|--|-------|
| APP PASCUA<br>Pascua Approach   |                               | 127.3/118.1                   | TORRE PASCUA<br>Pascua Tower |                          | 118.1       | CONTROL TERRESTRE<br>Ground Control  |  | 121.9 |
| LOC IIPA<br><b>110.3</b>  | FINAL APCH CRS<br><b>103°</b> | MNM ALT D 6.0<br><b>1800'</b> | DA(H)<br><b>480'(353')</b>   | AD Elev.<br>THR 10 Elev. | <b>227'</b> | <br>MSA 25 NM IPA |  |       |
| APCH FRUSTRADA: Ascenso 2500' directo a OPNUD e ingrese a HLDG 282° derecha o según autorización ATC.<br>Missed Apch: Climb to 2500' direct to OPNUD and enter HLDG 282° right or according to ATC clearance. |                               |                               |                              |                          |             |  |  |       |



|   |  |          |                                       |          |                        |                            |
|---|--|----------|---------------------------------------|----------|------------------------|----------------------------|
| C<br>A<br>T<br>E<br>G<br>O<br>R<br>Í<br>A | DIRECTO RWY 10 <i>Straight in RWY 10</i> |          |                                       |          | CIRCULANDO<br>Circling | ALTN<br>Alternate Minimums |
|   | * ILS<br>DA <b>480' (353')</b>           |          | * LOC WO GP<br>MDA <b>580' (453')</b> |          |                        |                            |
|   | SSALF                                    | WO SSALF | SSALF                                 | WO SSALF |                        |                            |
| A   |  |          | 1.2 Km                                | 1.6 Km   | NA                     | VER PAG.<br>GEN 2.19       |
| B   | 1.2 Km                                   | 1.6 Km   | 1.6 Km                                | 2.0 Km   |                        |                            |
| C   |  |          | 2.0 Km                                | 2.4 Km   |                        |                            |
| D   |  |          |                                       |          |                        |                            |

LOC desalineado 0.9° respecto a eje de RWY / LOC offset 0.9° from RWY center line  
 \* WO IIPA DME PROC NA / PROCEDURE NOT AUTHORIZED WO IIPA DME

|                         |      |      |      |      |      |
|-------------------------|------|------|------|------|------|
| Veloc. Terrestre Kts    | 80   | 100  | 120  | 140  | 160  |
| GP 2.5° FPM             | 354' | 442' | 531' | 619' | 707' |
| Dist. FAF a MAPT 4.7 NM | 3:32 | 2:49 | 2:21 | 2:01 | 1:46 |

DASA / SECCION AIS-MAP