
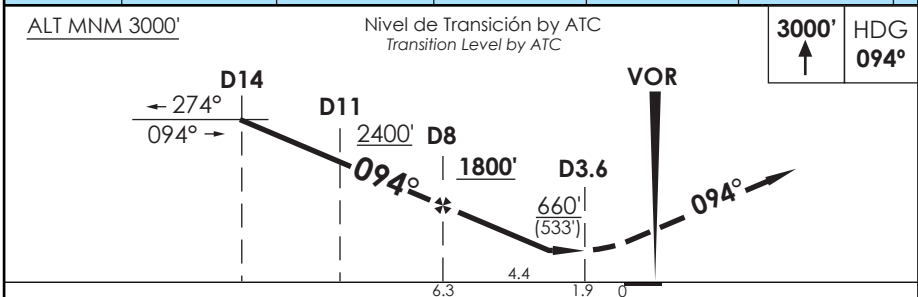
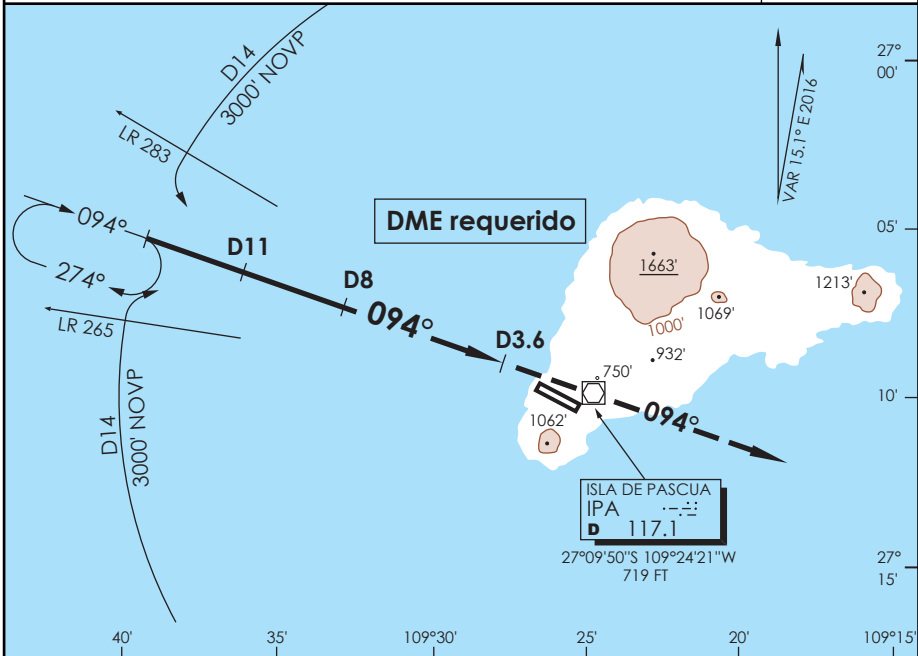


AP. MATAVERI ISLA DE PASCUA - CHILE

SCIP IAC 4
VOR Rwy 10

APP PASCUA Pascua Approach		127.3/118.1	TORRE PASCUA Pascua Tower		118.1	CONTROL TERRESTRE Ground Control		121.9
VOR IPA 117.1	FINAL APCH CRS 094°	MNM ALT D 8.0 1800'	MDA(H) 660'(533')	AD Elev. 227'	THR 10 Elev. 127'	 MSA 25 NM IPA		
APCH FRUSTRADA: Ascenso a 3000' HDG 094°, luego según autorización ATC. Missed Apch: Climb to 3000' on HDG 094°, then according to ATC clearance.								



CATEGORIA	DIRECTO RWY 10 Straight in RWY 10		CIRCULANDO Circling	ALTN Alternate Minimums
	MDA 660' (533')			
	SSALF	WO SSALF		
A	1.2 Km	1.6 Km	NA	(800') 3.2 Km
B				
C	2.0 Km	2.4 Km		
D				

Veloc. Terrestre Kts	80	100	120	140	160
Angulo DES 2.42° FPM	342'	428'	514'	599'	685'
Dist. FAF a MAPT 4.4 NM	3:18	2:38	2:12	1:53	1:39

CAMBIO: ← HGT FAF / NR IAC / VIS / VAR
Change: ← FAF HGT / IAC NR / VIS / VAR

DGAC AMDT 80

08 DICIEMBRE 2016

DASA / SECCION AIS-MAP