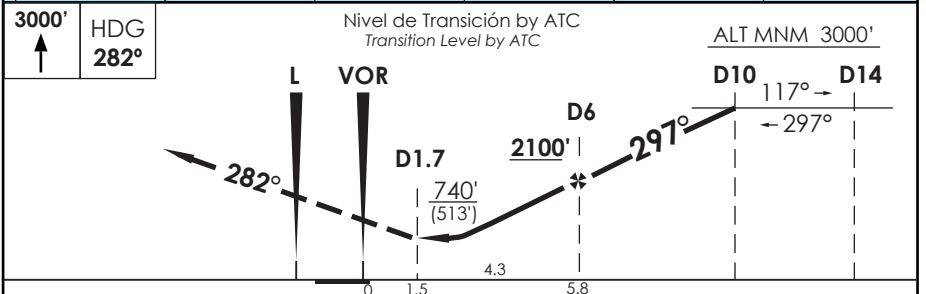
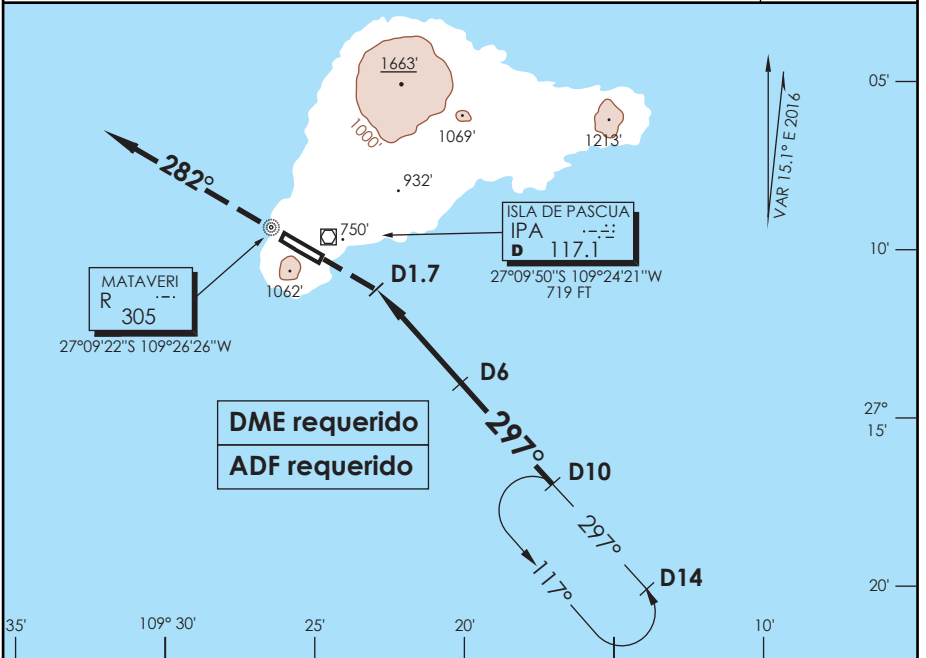


AP. MATAVERI ISLA DE PASCUA - CHILE

SCIP IAC 5
VOR Z Rwy 28

APP PASCUA Pascua Approach		127.3/118.1	TORRE PASCUA Pascua Tower		118.1	CONTROL TERRESTRE Ground Control		121.9
VOR IPA 117.1	FINAL APCH CRS 297°	MNM ALT D 6.0 2100'	MDA(H) 740' (513')	AD Elev. THR 28 Elev. 227'	<div style="border: 1px solid black; border-radius: 50%; width: 100px; height: 100px; display: flex; align-items: center; justify-content: center; margin: 0 auto;"> 3000 FT </div>			
APCH FRUSTRADA: Ascenso a 3000' HDG 282° L "R", luego según autorización ATC. Missed Apch: Climb to 3000' on HDG 282° "R" L, then according to ATC clearance.								MSA 25 NM IPA



Categoría	DIRECTO RWY 28 <i>Straight in RWY 28</i>		CIRCULANDO Circling	ALTN Alternate Minimums
	MDA 740' (513')			
A	1.6 Km		NA	(800') 3.2 Km
B	1.6 Km			
C	2.4 Km			
D	2.4 Km			

VOR/DME INSTALADO SOBRE TERRENO ALTO, ELEV TOTAL 750 FT
VOR/DME installed over high terrain, total elevation 750 FT

Veloc. Terrestre Kts	80	100	120	140	160
Angulo DES 2.96° FPM	419'	524'	628'	733'	838'
Dist. FAF α MAPT 4.3 NM	3:14	2:35	2:09	1:51	1:37

DASA / SECCION AIS-MAP