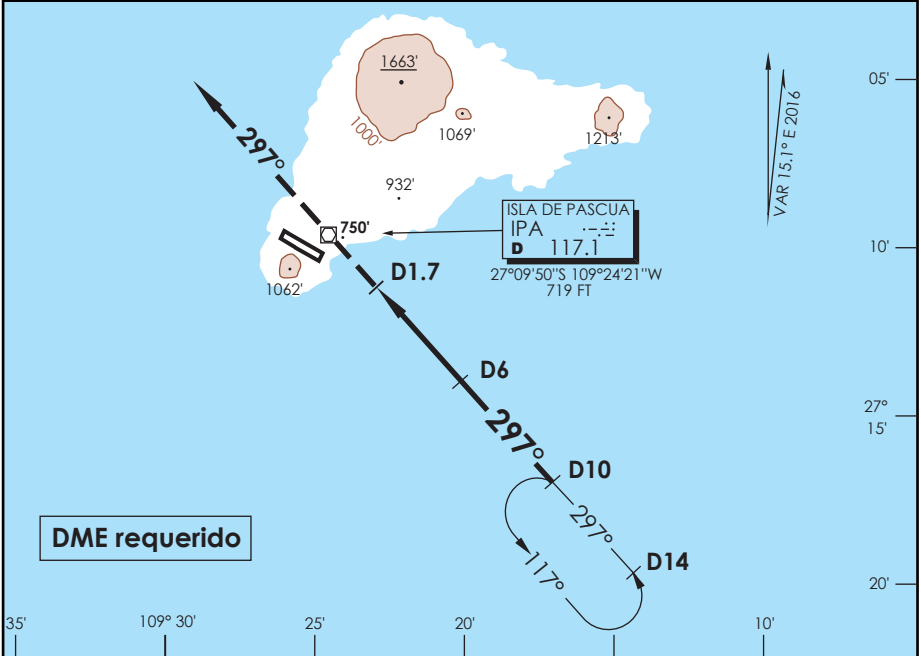


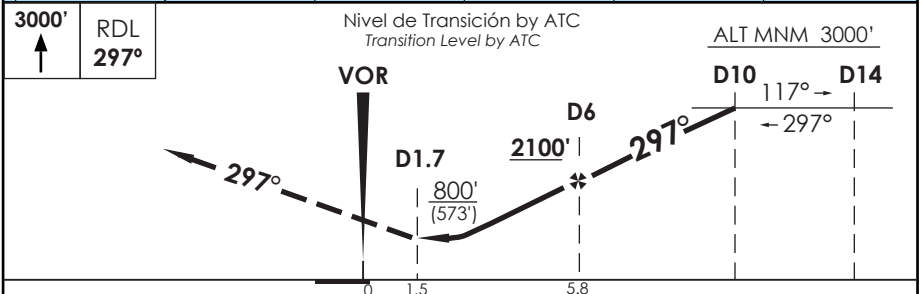
# AP. MATAVERI ISLA DE PASCUA - CHILE

SCIP IAC 6  
VOR Y Rwy 28

APP PASCUA Pascua Approach		127.3/118.1	TORRE PASCUA Pascua Tower		118.1	CONTROL TERRESTRE Ground Control		121.9
VOR IPA <b>117.1</b>	FINAL APCH CRS <b>297°</b>	MNM ALT D 6.0 <b>2100'</b>	MDA(H) <b>800' (573')</b>	AD Elev. <b>227'</b>	THR 28 Elev. <b>227'</b>	<div style="border: 1px solid black; border-radius: 50%; width: 100px; height: 100px; display: flex; align-items: center; justify-content: center; margin: 0 auto;"> <span>3000 FT</span> </div> <p>MSA 25 NM IPA</p>		
<p>APCH FRUSTRADA: Ascenso a 3000' via R297, luego según autorización ATC. Missed Apch: Climb to 3000' on R297, then according to ATC clearance.</p>								



**DME requerido**



Categoría	DIRECTO RWY 28 <i>Straight in RWY 28</i>		CIRCULANDO <i>Circling</i>	ALTN <i>Alternate Minimums</i>	
	<b>MDA 800' (573')</b>				
	A	1.6 Km		NA	(800') 3.2 Km
	B	2.8 Km			
C					
D					

CTN: VOR/DME INSTALADO SOBRE TERRENO ALTO, ELEV TOTAL 750 FT CTN: VOR/DME installed over high terrain, total elevation 750 FT					PROC DESALINEADO 15° RESPECTO A RCL PROC offset 15° with respect to RCL					
Veloc. Terrestre Kts	80	100	120	140	160					
Angulo DES 2.96° FPM	419'	524'	628'	733'	838'					
Dist. FAF a MAPT 4.3 NM	3:14	2:35	2:09	1:51	1:37					

DASA / SECCION AIS-MAP