
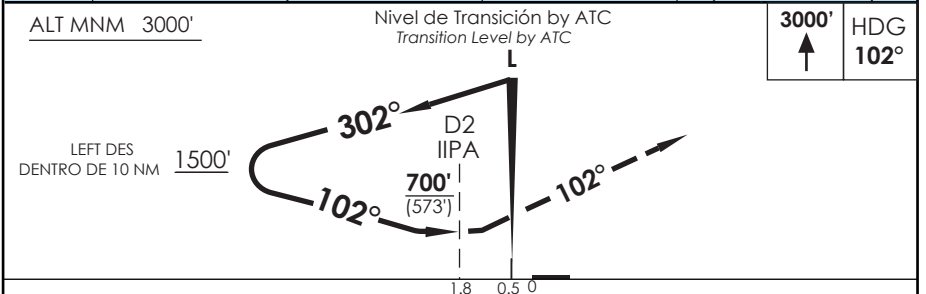
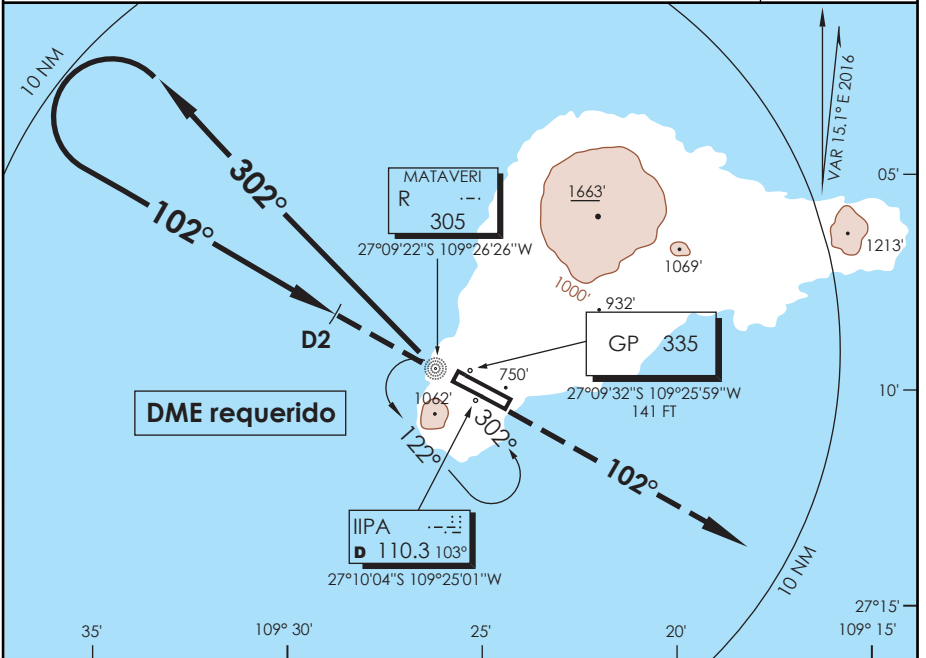


AP. MATAVERI ISLA DE PASCUA - CHILE

SCIP IAC 7
NDB Z Rwy 10

APP PASCUA Pascua Approach	127.3/118.1	TORRE PASCUA Pascua Tower	118.1	CONTROL TERRESTRE Ground Control	121.9
L "R" 305	FINAL APCH CRS 102°	WO FAF	MDA(H) 700' (573')	AD Elev. THR 10 Elev. 227'	 MSA 25 NM IPA
APCH FRUSTRADA: ASC 3000' HDG 102° L "R", luego según autorización ATC. Missed Apch: Climb to 3000' on HDG 102° L "R", then according to ATC clearance.					



Categoría	DIRECTO RWY 10 Straight in RWY 10		CIRCULANDO Circling	ALTN Alternate Minimums
	SSALF	WO SSALF		
A	1.6 Km	2.0 Km	NA	(800') 3.2 Km
B				
C	2.4 Km	2.8 Km		
D				

DASA / SECCION AIS-MAP