
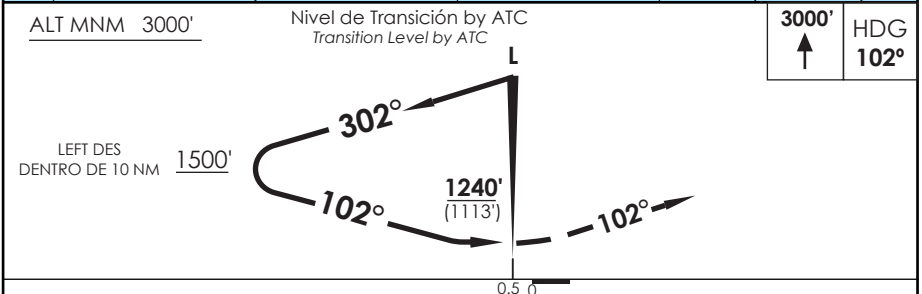
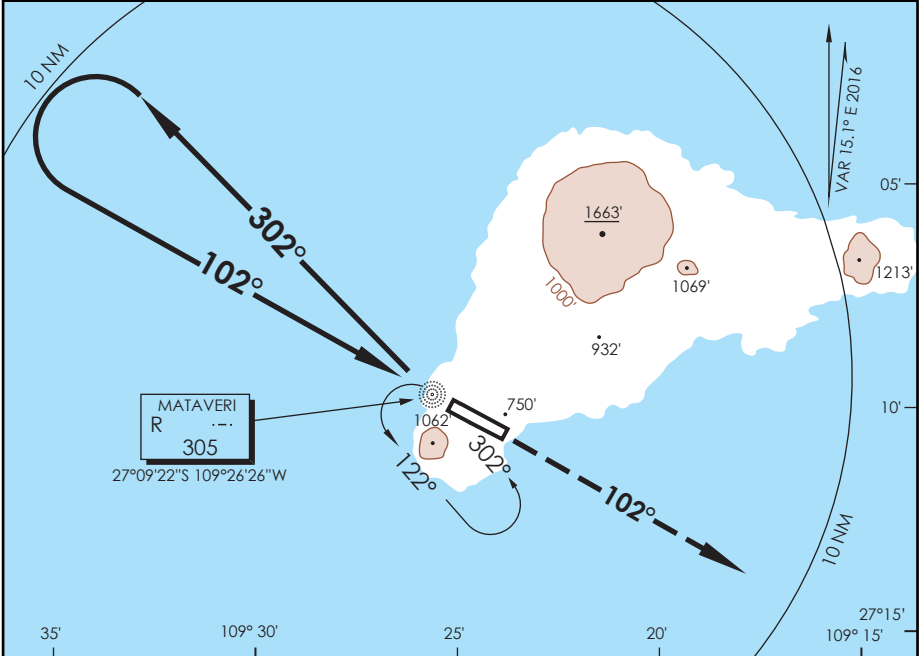


AP. MATAVERI
ISLA DE PASCUA - CHILE

SCIP IAC 8
NDB Y Rwy 10

APP PASCUA Pascua Approach		127.3/118.1	TORRE PASCUA Pascua Tower		118.1	CONTROL TERRESTRE Ground Control		121.9
L "R" 305	FINAL APCH CRS 102°	WO FAF		MDA(H) 1240' (1113')	AD Elev. THR 10 Elev.	227' 127'		 3000 FT MSA 25 NM IPA
APCH FRUSTRADA: ASC 3000' HDG 102° L "R", luego según autorización ATC. Missed Apch: Climb to 3000' on HDG 102° "R" L, then according to ATC clearance.								



CATEGORIA	DIRECTO RWY 10 Straight in RWY 10		CIRCULANDO Circling	ALTN Alternate Minimums
	MDA 1240' (1113')			
A	SSALF 1.6 Km	WO SSALF 2.0 Km	NA	(1113') 4.8 Km
B	2.0 Km	2.4 Km		
C	4.4 Km	4.8 Km		
D				

DASA / SECCION AIS-MAP