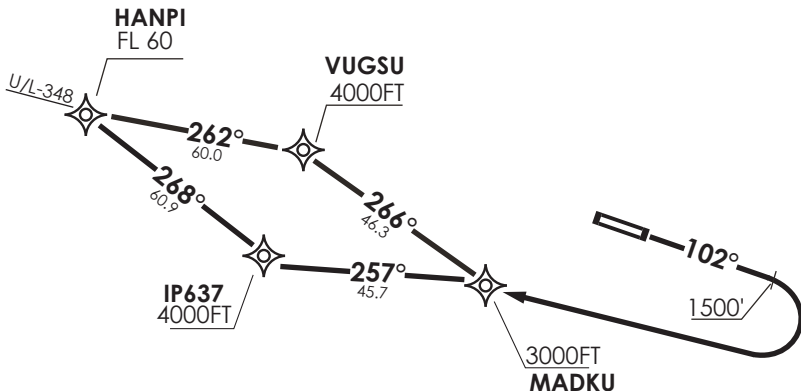


ISLA DE PASCUA

GND	121.9
TWR	118.1
APP	127.3

VAR 15,1° E 2017

HANPI 1B



HANPI 1A

Notas

- 1.- Requiere aprobación RNAV1 o RNP1.
- 2.-Requiere GNSS.

Notes

- 1.- RNAV1 OR RNP1 approval RQRD.
- 2.- GNSS required.

Altitud de Transición by ATC

Transition Level by ATC

No se ajusta a escala / Not to scale

HANPI 1A / HANPI 1B

DEP RWY 10: Ascienda en TR102° hasta 1500FT, posterior...

TAKE-OFF RWY 10: Climb on TR102° until 1500ft, then...

HANPI 1A: viraje derecha directo a MADKU-IP637-HANPI para interceptar AWY U/L-348. Cruzar MADKU a 3000ft o superior, IP637 a 4000FT o superior, HANPI a FL60 o superior, luego según autorización ATC.

HANPI 1A: turn right direct to MADKU-IP637-HANPI to intercept AWY U/L-348. Cross MADKU at or above 3000FT, IP637 at or above 4000FT, HANPI at or above FL60, then according to ATC clearance.

HANPI 1B: viraje derecha directo a MADKU-VUGSU-HANPI para interceptar AWY U/L-348. Cruzar MADKU a 3000FT o superior, VUGSU a 4000FT o superior, HANPI a FL60 o superior

HANPI 1B: turn right direct to MADKU-VUGSU-HANPI to intercept AWY U/L-348. Cross MADKU at or above 3000FT, VUGSU at or above 4000FT, HANPI at or above FL60, then according to ATC clearance.