


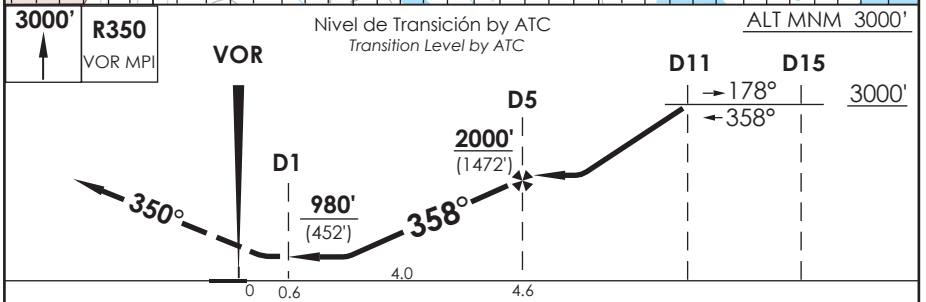
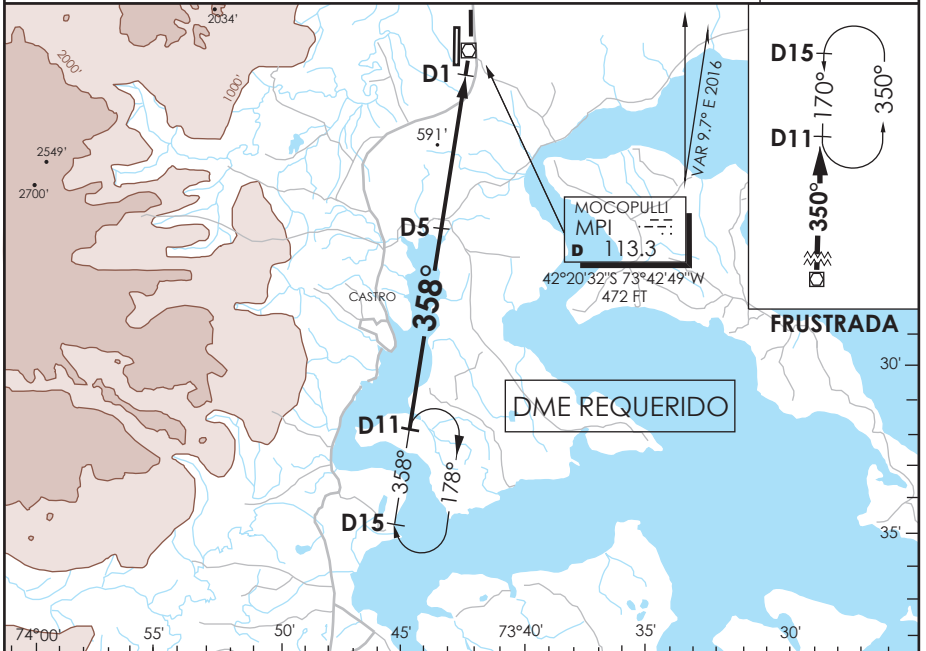
# AD. MOCOPULLI DALCAHUE - CHILE

SCPQ IAC 2  
VOR Rwy 35

APP PUERTO MONTT RADAR Puerto Montt Radar Approach	121.3	CHILOÉ Torre CHILOÉ Tower	118.4	CONTROL TERRESTRE Ground Control	121.6
---	-------	------------------------------	-------	-------------------------------------	-------

VOR MPI <b>113.3</b>	FINAL APCH CRS <b>358°</b>	MNM ALT D5 <b>2000' (1472')</b>	MDA <b>980' (452')</b>	AD Elev. 528' THR 35 Elev. <b>528'</b>	 4100 FT MSA 25 NM MPI
-------------------------	-------------------------------	------------------------------------	---------------------------	--	---

APCH FRUSTRADA: Ascenso 3000FT R350 VOR MPI, ingrese HLDG BTN D11 y D15 N 170° izquierda o según autorización ATC.  
 Missed Apch: climb to 3000FT on R350 MPI VOR, enter on HLDG BTN D11 and D15 N 170° left or according to ATC clearance.



CATEGORÍA	DIRECTO RWY 35 Straight in RWY 35		CIRCULANDO Circling	ALTN Alternate Minimums	
	MDA <b>980' (452')</b>			980' (452')	(800')
	SSALF	WO SSALF	1.6 Km		
	A	1.2 Km	1.6 Km	1120' (592')	2.4 Km
B	2.0 Km	2.4 Km	3.2 Km		
C					
D					

Veloc. Terrestre Kts	80	100	120	140	160
Angulo DES 3.0° FPM	425'	531'	637'	743'	849'
MIN:SEC (FAFTO MAPT 4.0)	3:00	2:24	2:00	1:43	1:30

DASA / SECCION AS-MAP