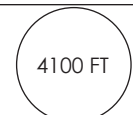
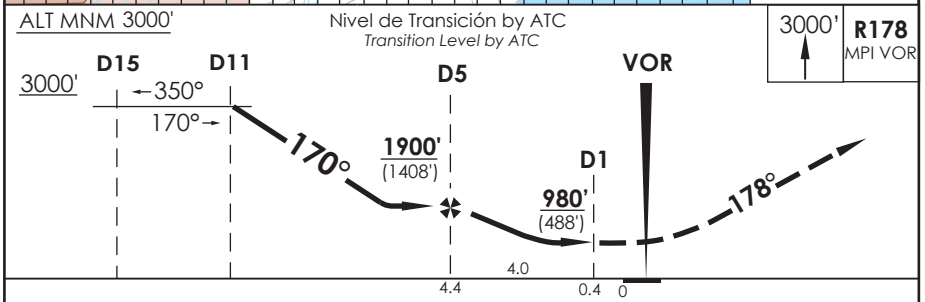
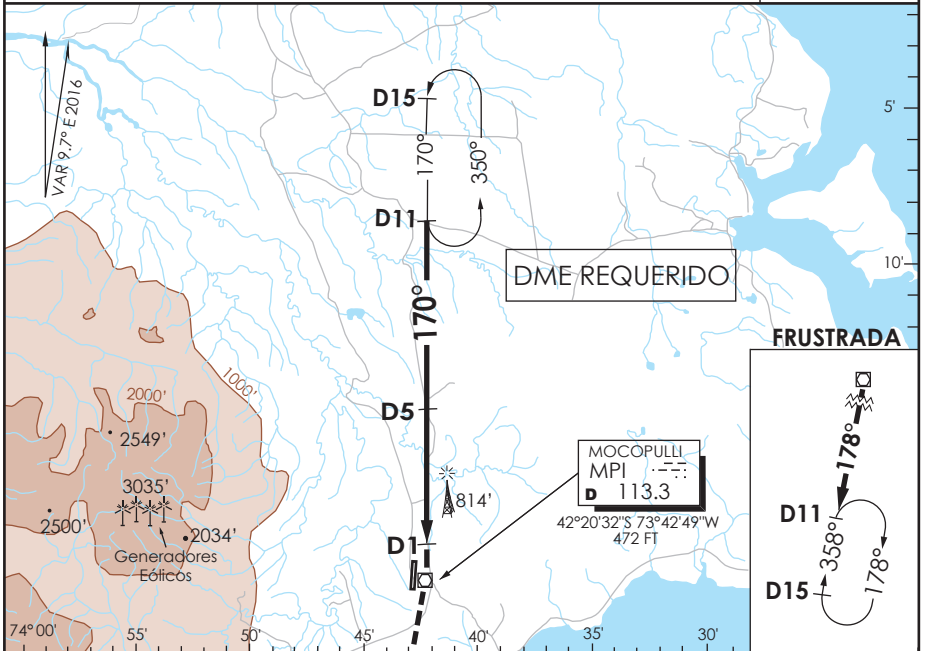


# AD. MOCOPULLI DALCAHUE - CHILE

SCPQ IAC 3  
VOR Rwy 17

APP PUERTO MONTI RADAR Puerto Montt Radar Approach 121.3		CHILOÉ Torre CHILOÉ Tower 118.4		CONTROL TERRESTRE Ground Control 121.6	
VOR MPI <b>113.3</b>	FINAL APCH CRS <b>170°</b>	MNM ALT D5 <b>1900'(1408')</b>	MDA <b>980'(488')</b>	AD Elev. 528' THR 17 Elev. <b>492'</b>	 4100 FT MSA 25 NM MPI
APCH FRUSTRADA: Ascenso 3000FT R178 VOR MPI, ingreso HLDG BTN D11 y D15 S 358° derecho o según autorización ATC. Missed Apch: Climb to 3000FT on R178 MPI VOR/DME, enter on HLDG BTN D11 and D15 S 358°, right or according to ATC clearance.					



C A T E G O R Í A	DIRECTO RWY 17 <i>Straight in RWY 17</i>	CIRCULANDO <i>Circling</i>	ALTN <i>Alternate Minimums</i>
	MDA <b>980' (488')</b>		
A	1.6 Km	980' (452')	(800')
B		1.6 Km	
C	2.4 Km	1120' (592')	3.2 Km
D		3.2 Km	

Veloc. Terrestre Kts	80	100	120	140	160
Angulo DES 3.0° FPM	425'	531'	637'	743'	849'
MIN:SEC (FAF TO MAP1 4.0)	3:00	2:24	2:00	1:43	1:30

DASA / SECCION TAB-MAP