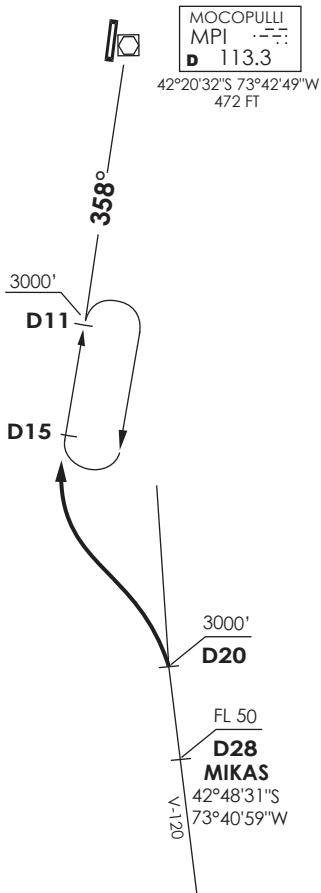


VAR 9,7° E 2016



MOCOPULLI
 MPI ---
 D 113.3

42°20'32"S 73°42'49"W
 472 FT

PTO. MONTT
 RDR 121.3

CHILOÉ
 GNDC 121.6
 TWR 118.4

Nivel de Transición by ATC
 Transition Level by ATC

SISAM

No se ajusta a escala / Not to scale

STAR MIKAS 1B

En D20 S MPI VOR/DME abandonar AWY V-120 para interceptar R178 (TR358°) hasta D11 S MPI a 3000FT o superior. Cruce MIKAS (D28 S MPI VOR/DME) a FL50 o superior, D20 S a 3000FT o superior, luego según autorización ATC.

At D20 S MPI VOR/DME leave AWY V-120 to intercept R178 (TR358°) until D 11 S MPI at or above 3000FT. Cross MIKAS (D28 S MPI VOR/DME) at or above FL50, D20 S at or above 3000FT, then according to ATC clearance.