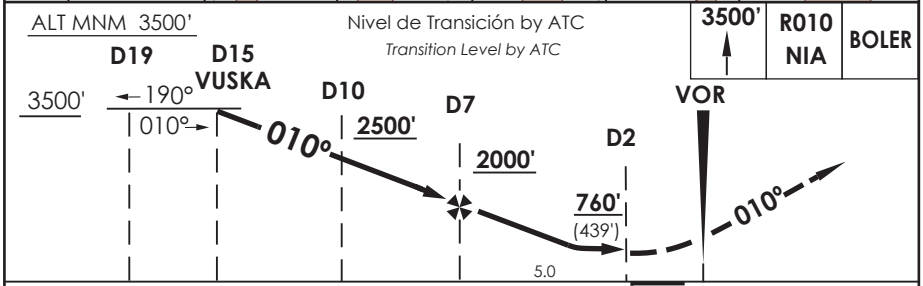
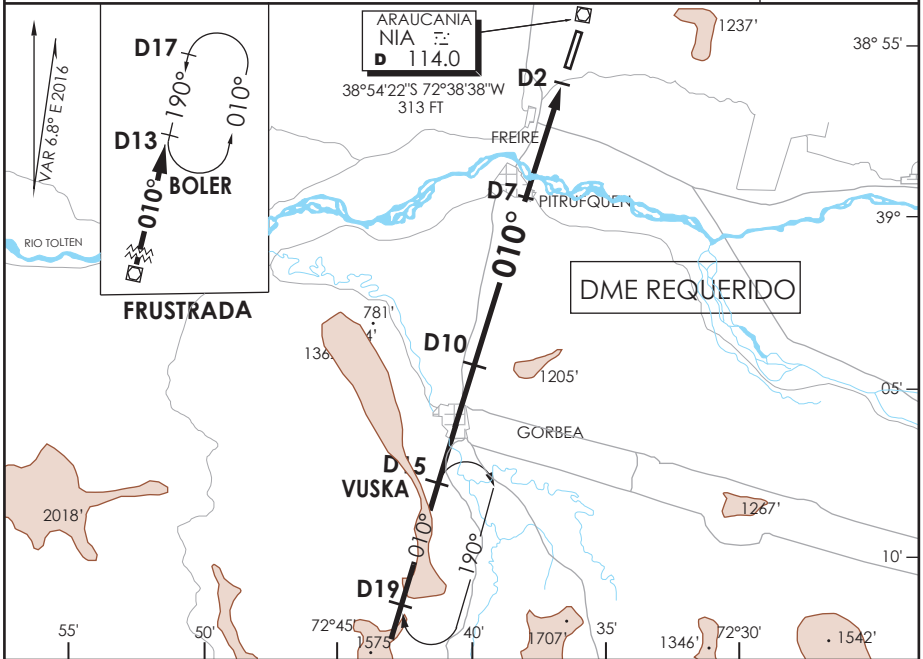


# AD. LA ARAUCANIA FREIRE - CHILE

SCQP IAC 5  
VOR Rwy 01

TEMUCO RADAR Temuco Radar	118.7 / 119.2	TORRE TEMUCO Temuco Tower	118.4	CONTROL TERRESTRE Ground Control	121.6
VOR NIA <b>114.0</b>	FINAL APCH CRS <b>010°</b>	MNM ALT D7 <b>2000'</b>	MDA (H) <b>760' (439')</b>	AD Elev THR 01 Elev <b>321'</b>	5000 FT MSA 25 NM NIA
APCH FRUSTRADA: Ascenso a 3500' en R 010 NIA . Ingreso HLDG BOLER 190° izquierda, luego según autorización ATC. Missed Apch: Climb to 3500' on R 010 NIA. Enter on HLDG BOLER 190° left, then according to ATC clearance.					



C A T E G O R I A	DIRECTO RWY 01 <i>Straight in RWY 01</i>		CIRCULANDO Circling	ALTN Alternate Minimums
	MDA <b>760' (439')</b>			
	ALSF-2	WO ALSF-2	1.6 Km 2.4 Km 3.2 Km	(800') 3.2 Km
	A	1.2 Km		
B		860' (539')		
C		960' (639')		
D				

Veloc. Terrestre Kts	80	100	120	140	160
Angulo DES 3.0° FPM	425'	531'	637'	743'	849'
FAF to MAPt 5.0 NM	3:45	3:00	2:30	2:09	1:53

DASA / SECCION TAB-MAP