

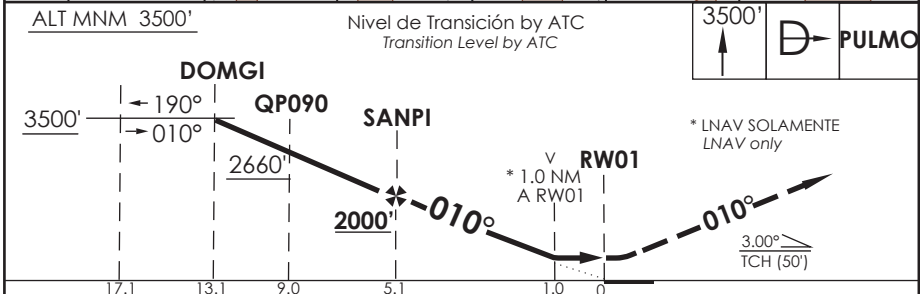
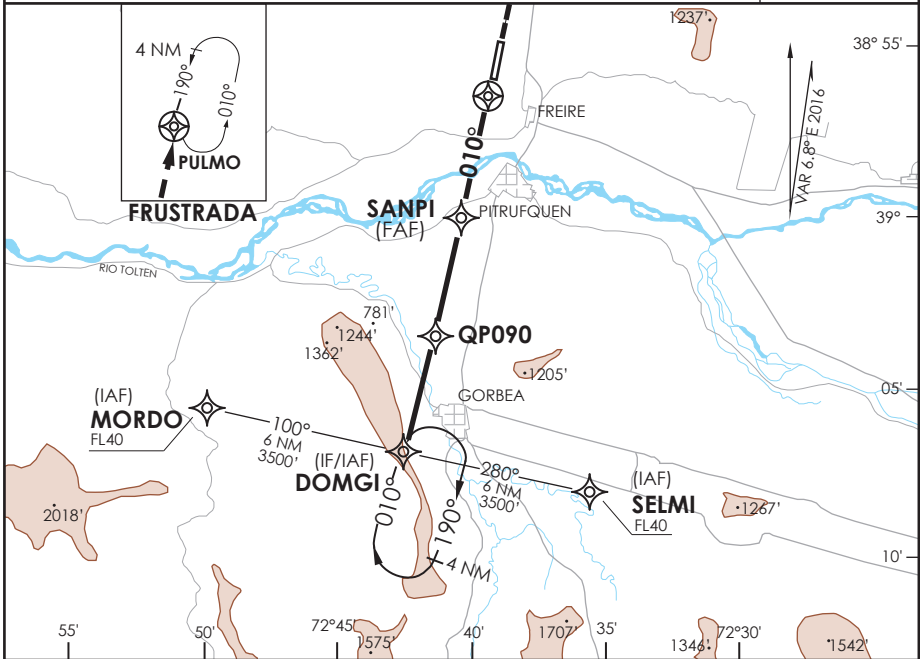
# AD. LA ARAUCANIA FREIRE - CHILE

## SCQP IAC 7 RNAV (GNSS) Y Rwy 01

TEMUCO RADAR Temuco Radar	118.7 / 119.2	TORRE TEMUCO Temuco Tower	118.4	CONTROL TERRESTRE Ground Control	121.6
<b>RNAV</b>	FINAL APCH CRS <b>010°</b>	MNM ALT SANPI <b>2000'</b>	LNAV/VNAV DA(H) <b>640' (319')</b>	AD Elev THR 01 Elev	<b>321'</b> <b>321'</b>

APCH FRUSTRADA: Ascenso a 3500' directo PULMO, ingreso HLDG 190° izquierda o según autorización ATC.  
 Missed Apch: Climb to 3500' direct PULMO, enter on HLDG 190° left or according to ATC clearance.

5000 FT  
MSA 25 NM RWY01



CATEGORIA	DIRECTO RWY 01 Straight in RWY 01				CIRCULANDO Circling	ALTN Alternate Minimums
	LNAV/VNAV DA 640' (319')		LNAV MDA 700' (379')			
	ALSF-2	WO ALSF-2	ALSF-2	WO ALSF-2		
A			0.8 Km	1.6 Km	760' (439')	(800') 3.2 Km
B	0.8 Km	1.6 Km			1.6 Km	
C			1.2 Km	2.0 Km	860' (539')	
D					960' (639')	

- Requiere aprobación RNP APCH.  
- RNP APCH approval RQRD.

Para sistemas Baro VNAV no compensados proc NA bajo -10°C o sobre 47°C.  
For uncompensated Baro VNAV systems procedure NA below -10°C or above 47°C.