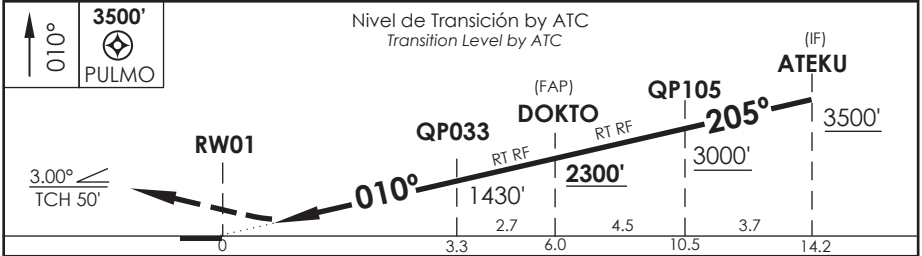
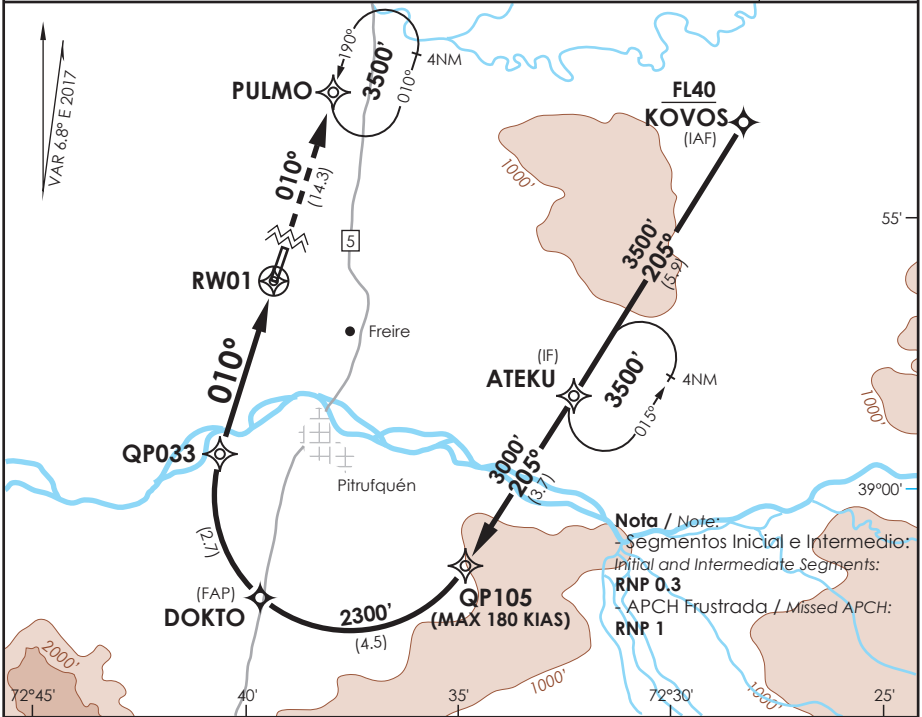


AD. LA ARAUCANIA
FREIRE - CHILE

SCQP IAC 9
RNAV (RNP) Z Rwy 01

TEMUCO RADAR Temuco Radar	118.7 / 119.2	TORRE TEMUCO Temuco Tower	118.4	CONTROL TERRESTRE Ground Control	121.6
RNAV	FINAL APCH CRS 010°	MNM ALT DOKTO 2300'	DA/H ver mínimos DA/H refer to minimums	AD Elev. 321' THR01 Elev. 321'	5000 FT MSA 25 NM RW01
APCH FRUSTRADA: Ascenso en TR010° directo a PULMO, 3500' e ingresar en HLDG. <i>Missed Apch: Climb on TR010° direct to PULMO, 3500' and enter in HLDG.</i>					



C A B C D	DIRECTO RWY 01 <i>Straight in RWY 01</i>				RNP AR RWY 01 SCQP: Requiere RF. Para sistemas Baro VNAV no compensados proc NA bajo -5°C o sobre 54°C. Autorización requerida de acuerdo a DAN 06-22. RF required. For uncompensated Baro VNAV systems procedure NA below -5°C or above 54°C. Authorization required according to DAN 06-22.	
	RNP 0.15		RNP 0.30			
	DA 580' (259')		DA 660' (339')			
	CAT D: DA 590' (269')					
	ALSF-2	WO ALSF-2	ALSF-2	WO ALSF-2		
A						
B	0.8 Km	1.6 Km	0.8 Km	1.6 Km		
C						
D						
Veloc. Terrestre Kts	80	100	120	140	160	MNM ALTN RNP 0.30: VER PAG GEN 2.19 See pag 2.19
Angulo DES 3° FPM	425'	531'	637'	743'	849'	REQUIERE AUTORIZACIÓN ESPECIAL PARA ACFT Y CREW
MAPt en DA						SPECIAL ACFT AND AIRCREW AUTHORIZATION REQUIRED

CAMBIO: VAR / MNM ALTN
 Change: VAR / ALTN MNM

DGAC AMDT 81

17 AGOSTO 2017

DASA / SECCION AIS-WAP