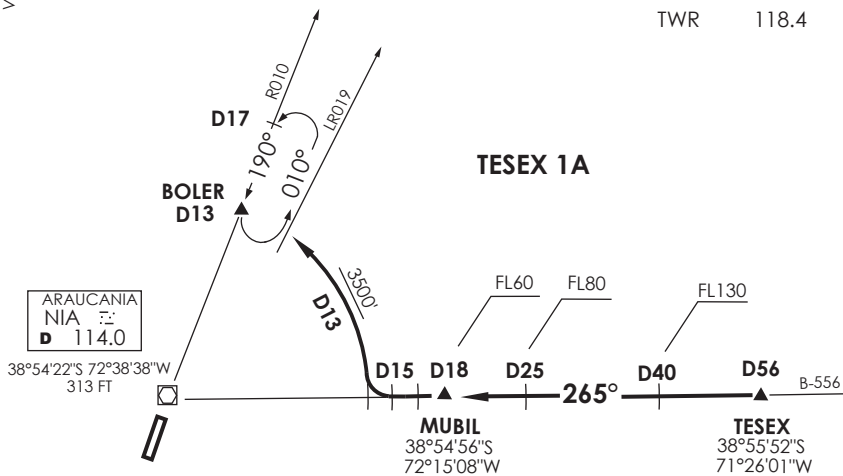


VAR 6,8° E 2017

TEMUCO	
RDR	118.7
SRY	119.2
TWR	118.4



Nivel de Transición by ATC  
 Transition Level by ATC

No se ajusta a escala / Not to scale

### STAR TESEX 1A

Via R085 (TR265°) NIA VOR/DME, cruzar TESEX (D56 E NIA VOR) FL130 o superior, D40 E NIA VOR FL130 o superior, D25 E FL80 o superior, MUBIL (D18 E NIA VOR) FL60 o superior, posterior...

Via R085 (TR265°) NIA VOR/DME, cross TESEX (D56 E NIA VOR) at or above FL130, D40 E NIA VOR at or above FL130, D25 E at or above FL80, MUBIL (D18 E NIA VOR) at or above FL60, then...

**TESEX 1A:** En D15 E, viraje derecha para orbitar D13 hacia BOLER INT, en descenso a 3500FT o superior, o según autorización ATC.

**TESEX 1A:** At D15 E, right turn to join D13 to BOLER INT, descending at or above 3500FT, or according to ATC clearance.

DASA / SECCION AIS-MAP