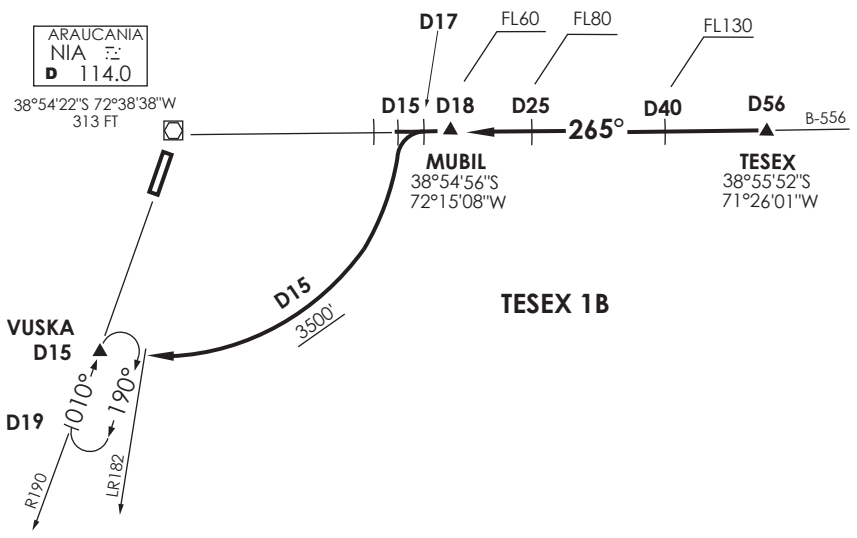


VAR 6,8° E 2017

TEMUCO

RDR	118.7
SRY	119.2
TWR	118.4



Nivel de Transición by ATC
 Transition Level by ATC

No se ajusta a escala / Not to scale

STAR TESEX 1B

Via R085 (TR265°) NIA VOR/DME, cruzar TESEX (D56 E NIA VOR) FL130 o superior, D40 E NIA VOR FL130 o superior, D25 E FL80 o superior, MUBIL (D18 E NIA VOR) FL60 o superior, posterior...

Via R085 (TR265°) NIA VOR/DME, cross TESEX (D56 E NIA VOR) at or above FL130, D40 E NIA VOR at or above FL130, D25 E at or above FL80, MUBIL (D18 E NIA VOR) at or above FL60, then...

TESEX 1B: En D17 E , viraje izquierda para orbitar D15 hacia VUSKA INT, en descenso a 3500FT o superior, o según autorización ATC,

TESEX 1B: At D17 E, left turn to joint D15 to VUSKA INT, descending at or above 3500FT, or according to ATC clearance.

DASA / SECCION AIS-MAP