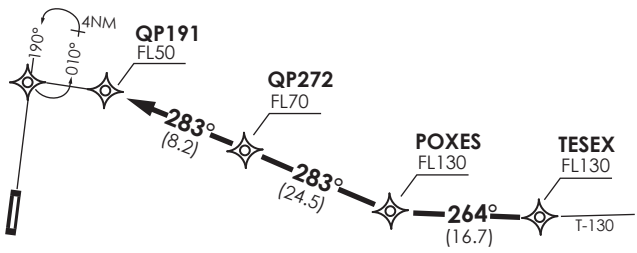


VAR 6.8° E 2017

TEMUCO	
RDR	118.7
SRY	119.2
TWR	118.4



- Notas  
 1.- Requiere aprobación RNAV1 o RNP1.  
 2.-Requiere GNSS.
- Notes  
 1.- RNAV1 OR RNP1 approval RQRD.  
 2.- GNSS required.

Nivel de Transición by ATC  
 Transition Level by ATC

No se ajusta a escala / Not to scale

**STAR TESEX 1C RNAV**

**TESEX 1C :** En AWT T-130, desde TESEX proceder directo a POXES- QP272 - QP191. Cruzar TESEX a FL130 o superior, POXES a FL130 o superior, QP272 a FL70 o superior, QP191 a FL50 o superior, luego según autorización ATC.

**TESEX 1C:** On AWY T-130, from TESEX proceed direct to POXES - QP272 - QP191. Cross TESEX at or above FL130, POXES at or above FL130, QP272 at or above FL70, QP191 at or above FL50, then according to ATC clearance.

DASA / SECCION AIS-MAP