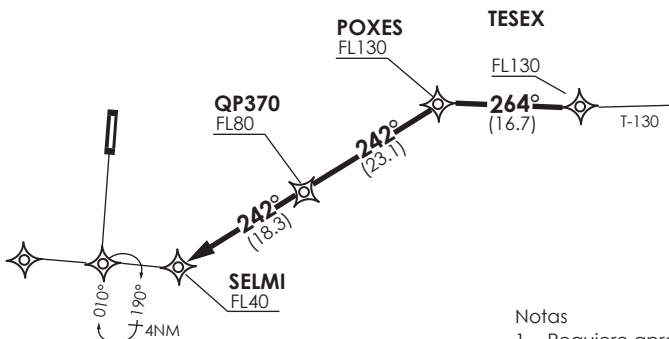


↑  
 VAR 6.8° E 2017  
 ↑

**TEMUCO**

RDR 118.7  
 SRY 119.2  
 TWR 118.4



Notas

- 1.- Requiere aprobación RNAV1 o RNP1.
- 2.-Requiere GNSS.

Notes

- 1.- RNAV1 OR RNP1 approval RQRD.
- 2.- GNSS required.

Nivel de Transición by ATC  
 Transition Level by ATC

No se ajusta a escala / Not to scale

**STAR TESEX 1D RNAV**

**TESEX 1D :** En AWY T-130, desde TESEX proceder directo a POXES-QP370-SELM. Cruzar TESEX a FL130 o superior, POXES a FL130 o superior, QP370 a FL80 o superior, SELMI a FL40 o superior, luego según autorización ATC.

**TESEX 1D :** On AWY T-130, from TESEX proceed direct to POXES - QP370 - SELMI. Cross TESEX at or above FL130, POXES at or above FL130, QP370 at or above FL80, SELMI at or above FL40, then according to ATC clearance.

DASA / SECCION AIS-MAP