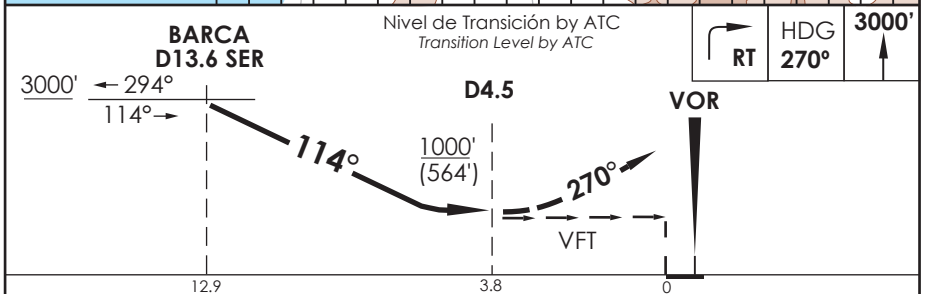
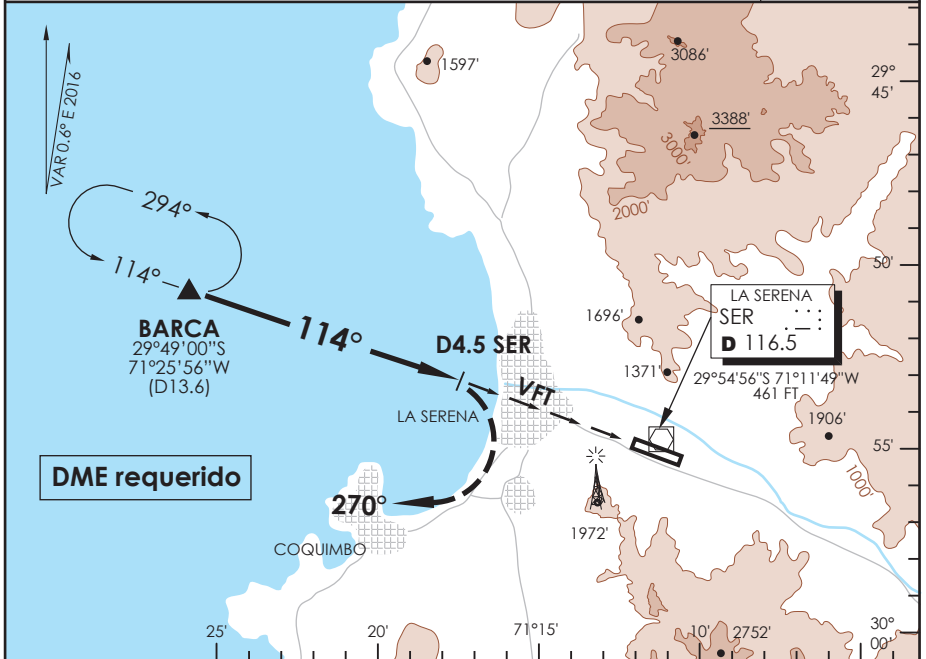


# AD. LA FLORIDA LA SERENA - CHILE

SCSE IAC 1  
VOR Z Rwy 12

APP SANTIAGO CENTRO Santiago Center Approach 129.1		TORRE LA SERENA La Serena Tower 118.6		CONTROL TERRESTRE Ground Control 121.9	
VOR SER <b>116.5</b>	FINAL APCH CRS <b>114°</b>	<b>WO FAF</b>	MDA(H) <b>1000'(564')</b>	AD Elev. <b>481'</b>	THR12 Elev. <b>436'</b>
APCH FRUSTRADA: Viraje derecha inmediato HDG 270°, ascenso 3000', luego según autorización ATC. Missed Apch: Right turn immediately HDG 270°, climb to 3000', then according to ATC clearance.					9500 FT
					MSA 25 NM SER



CATEGORIA	DIRECTO RWY 12 <i>Straight in RWY 12</i>	CIRCULANDO NORTE * <i>Circling North</i>	ALTN <i>Alternate Minimums</i>		
	MDA <b>1000' (564')</b> CEIL 800 Ft				
A	3.6 Km	1000'(519') CEIL 800'	3.6 Km	CEIL 800'	3.6 Km
B		1780'(1299') CEIL 1400'		CEIL 1400'	
C	4.0 Km	2120'(1639') CEIL 1800'	4.8 Km	CEIL 1800'	4.8 Km
D					

\* Aproximación Circulando NA de noche / *Circling Approach not authorized at night*

DASA / SECCION AIS-MAP