
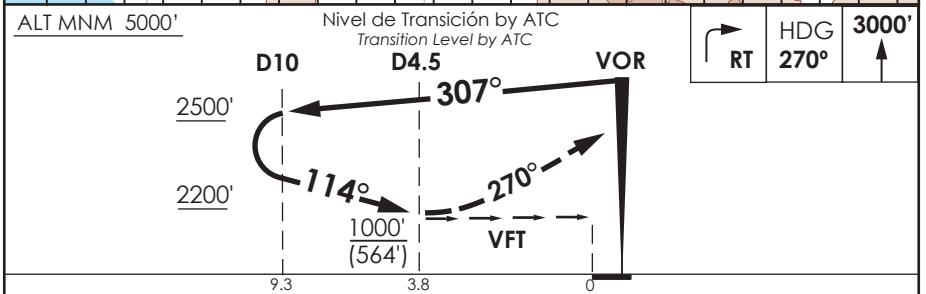
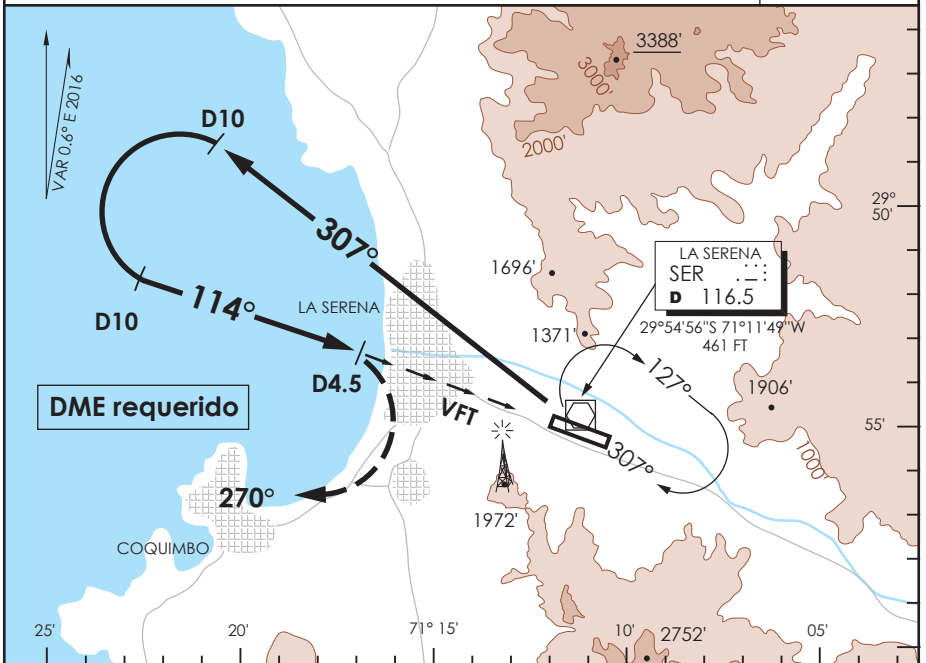


AD. LA FLORIDA LA SERENA - CHILE

SCSE IAC 2 VOR Y Rwy 12

| | | | | | |
|---|-------------------------------|--|------------------------------|---|---|
| APP SANTIAGO CENTRO Santiago Center Approach 129.1 | | TORRE LA SERENA La Serena Tower 118.6 | | CONTROL TERRESTRE Ground Control 121.9 | |
| VOR SER 116.5 | FINAL APCH CRS 114° | WO FAF | MDA(H) 1000'(564') | AD Elev. 481' THR12 Elev. 436' |  9500 FT MSA 25 NM SER |
| APCH FRUSTRADA: Viraje derecha inmediato HDG 270°, ascenso 3000', luego según autorización ATC. Missed Apch: Right turn immediately HDG 270°, climb to 3000', then according to ATC clearance. | | | | | |



| CATEGORIA | DIRECTO RWY 12 <i>Straight in RWY 12</i> | CIRCULANDO NORTE * <i>Circling North</i> | ALTN <i>Alternate Minimums</i> | | |
|-----------|--|---|-----------------------------------|------------|--------|
| | MDA 1000' (564') CEIL 800 Ft | | | | |
| A | 3.6 Km | 1000' (519') CEIL 800' | 3.6 Km | CEIL 800' | 3.6 Km |
| B | | 1780' (1299') CEIL 1400' | | CEIL 1400' | |
| C | 4.0 Km | 2120' (1639') CEIL 1800' | 4.8 Km | CEIL 1800' | 4.8 Km |
| D | | | | | |

* Aproximación Circulando NA de noche / *Circling Approach not authorized at night*