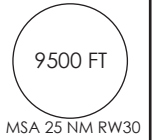


AD. LA FLORIDA LA SERENA - CHILE

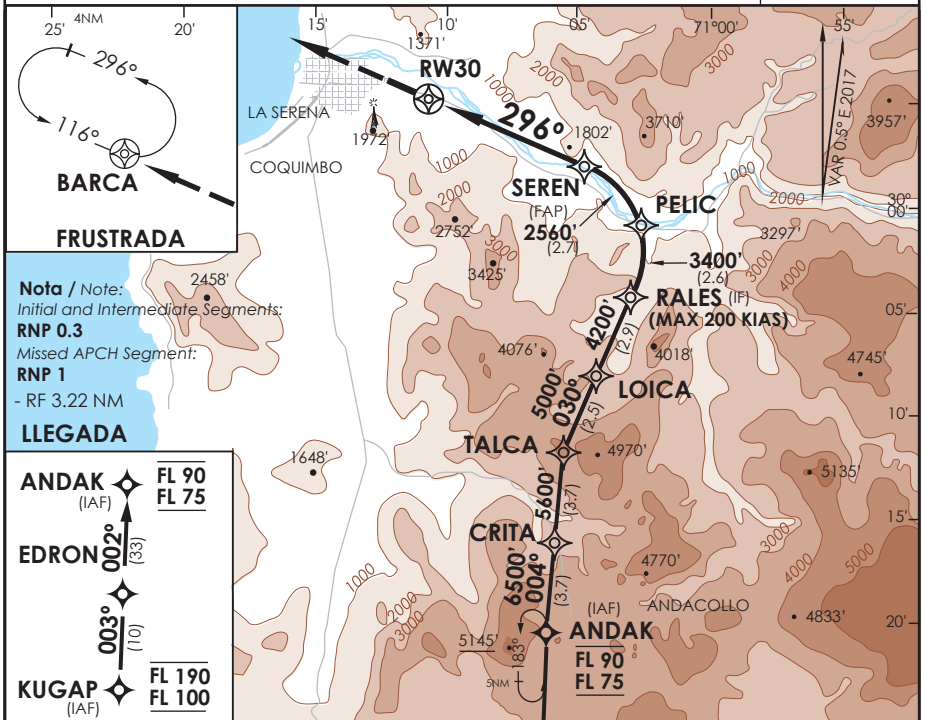
SCSE IAC 4 RNAV (RNP) Z Rwy 30

APP SANTIAGO CENTRO Santiago Center Approach	129.1	TORRE LA SERENA La Serena Tower	118.6	CONTROL TERRESTRE Ground Control	121.9
---	-------	------------------------------------	-------	-------------------------------------	-------

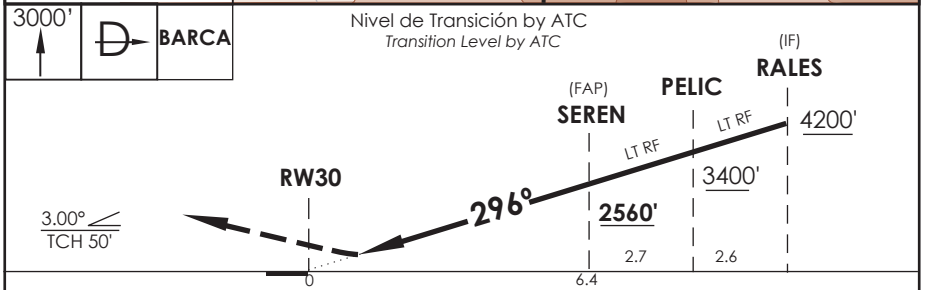
RNAV	FINAL APCH CRS 296°	MNM ALT SEREN 2560'	DA/H ver mínimos DA/H refer to minimums	AD Elev. THR30 Elev.	481' 481'
-------------	-------------------------------	-------------------------------	--	-------------------------	----------------------------



APCH FRUSTRADA: Ascenso 3000' directo a BARCA, luego según autorización ATC.
Missed Apch: Climb to 3000' direct to BARCA, then according to ATC clearance.



Nivel de Transición by ATC
Transition Level by ATC



A B C D	DIRECTO RWY 30 <i>Straight in RWY 30</i>		RNP AR RWY 30 SCSE: Requiere RF. Para sistemas Baro VNAV no compensados proc NA bajo 6.8°C o sobre 48°C. Autorización requerida de acuerdo a DAN 06-22. RF required. For uncompensated Baro VNAV systems procedure NA below 6.8°C or above 48°C. Authorization required according to DAN 06-22.				
	RNP 0.15 DA 731' (250')	RNP 0.30 DA 900' (419')					
	1.6 Km		1.6 Km				
	DA 745' (264')	1.6 Km	DA 1172' (691')	3.2 Km			
Veloc. Terrestre Kts	80	100	120	140	160	MNM ALTN RNP 0.30: VER PAG GEN 2.19 See pag 2.19	
Angulo DES 3.0° FPM	425'	531'	637'	743'	849'	RQR AUTORIZACIÓN ESPECIAL PARA ACFT Y CREW SPECIAL ACFT AND AIRCREW AUTHORIZATION RQRD	
MAPt en DA							

CAMBIO: → KUGAP / TR / MNM ALTN / VAR
Change: → KUGAP / TR / ALTN MNM / VAR

DGAC AMDT 81

17 AGOSTO 2017