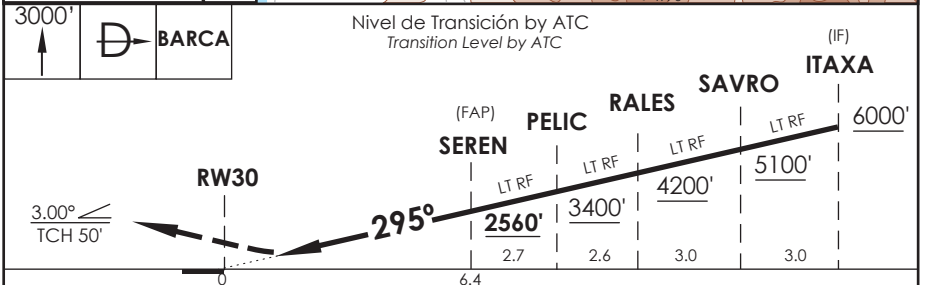


AD. LA FLORIDA
LA SERENA - CHILE

SCSE IAC 5
RNAV (RNP) Y Rwy 30

| | | | | | |
|---|-------------------------------|--|--|---|----------------|
| APP SANTIAGO CENTRO Santiago Center Approach 129.1 | | TORRE LA SERENA La Serena Tower 118.6 | | CONTROL TERRESTRE Ground Control 121.9 | |
| RNAV | FINAL APCH CRS 295° | MNM ALT SEREN 2560' | DA/H ver mínimos DA/H refer to minimums | AD Elev. THR30 Elev. 481' | 9500 FT |
| APCH FRUSTRADA: Ascenso 3000' directo a BARCA, luego según autorización ATC. Missed Apch: Climb to 3000' direct to BARCA, then according to ATC clearance. | | | | | |
| | | | | | MSA 25 NM RW30 |



| | | | | | | |
|----------------------|-----------------------------------|-----------------------------------|--|------|------|---|
| A B C D | DIRECTO RWY 30 Straight in RWY 30 | | RNP AR RWY 30 SCSE: Requiere RF. Para sistemas Baro VNAV no compensados proc NA bajo 6.8°C o sobre 48°C. Autorización requerida de acuerdo a DAN 06-22. RF required. For uncompensated Baro VNAV systems procedure NA below 6.8°C or above 48°C. Authorization required according to DAN 06-22. | | | |
| | RNP 0.15 DA 731' (250') | RNP 0.30 DA 900' (419') | | | | |
| | 1.6 Km | | | | | |
| | DA 745' (264') 1.6 Km | DA 1172' (691') 3.2 Km | | | | |
| Veloc. Terrestre Kts | 80 | 100 | 120 | 140 | 160 | MNM ALTN RNP 0.30: VER PAG GEN 2.19 See pag 2.19 RQR AUTORIZACIÓN ESPECIAL PARA ACFT Y CREW SPECIAL ACFT AND AIRCREW AUTHORIZATION RQRD |
| Angulo DES 3.0° FPM | 425' | 531' | 637' | 743' | 849' | |
| MAPt en DA | | | | | | |

CAMBIO: VAR/ MNM ALT /AWY
Change: VAR/ MNM ALT /AWY

DGAC NOTAM N°A2546/17

17 AGOSTO 2017

DASA / SECCION AIS-MAP