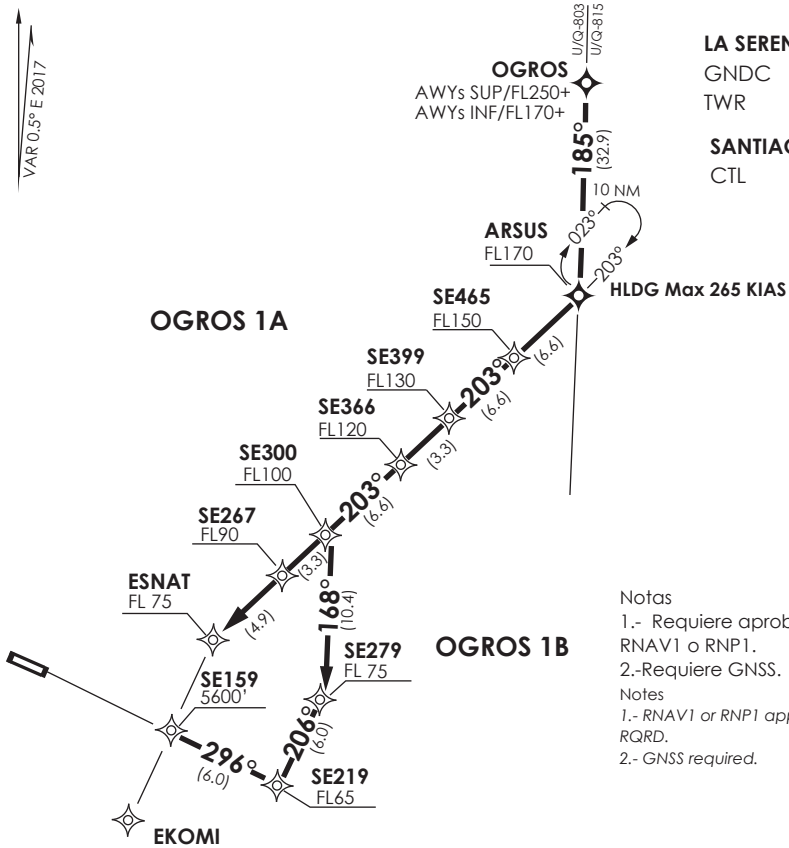


VAR 0.5° E 2017



LA SERENA

GNDC 121.9
 TWR 118.6

SANTIAGO

CTL 129.1

Notas

- 1.- Requiere aprobación RNAV1 o RNP1.
- 2.- Requiere GNSS.

Notes

- 1.- RNAV1 or RNP1 approval RQRD.
- 2.- GNSS required.

Nivel de Transición by ATC

Transition Level by ATC

No se ajusta a escala / Not to scale

STAR OGROS 1A / OGROS 1B RNAV

En AWYs U/Q-803 o U/Q-815, desde OGROS proceder directo a ARSUS-SE465-SE399-SE366-SE300 (AWYs superiores OGROS a FL250 o superior / AWYs inferiores a FL170 o superior). Cruzar ARSUS a FL170 o superior, SE465 a FL150 superior, SE399 a FL130 o superior, SE366 a FL120 o superior, SE300 a FL100 o superior.

On AWYs U/Q-803 or U/Q-815, from OGROS proceed direct to ARSUS-SE465-SE399-SE366-SE300 (Upper AWYs, cross OGROS at or above FL 250 / Lower AWYs, at or above FL170). Cross ARSUS at or above FL170, SE465 at or above FL150, SE399 at or above FL130, SE366 at or above FL120, SE300 at or above FL100.

OGROS 1A: Continuar directo a SE267-ESNAT. Cruzar SE267 a FL90 o superior, ESNAT a FL75 o superior, luego según autorización ATC.

OGROS 1A: Continue direct to SE267-ESNAT. Cross SE267 at or above FL90, ESNAT at or above FL75, then according to ATC clearance.

OGROS 1B: Continuar directo a SE279- SE219 - SE159. Cruzar SE279 a FL75 o superior, SE219 a FL65 o superior, SE159 a 5600FT o superior, luego según autorización ATC.

OGROS 1B: Continue direct to SE279- SE219 - SE159. Cross SE279 at or above FL75, SE219 at or above FL65, SE159 at or above 5600FT, then according to ATC clearance.

DASA / SECCION AIBS-MAP